

# SINGLE BAND PANEL ANTENNA ULTRA BROADBAND 1710 – 2690 MHz

## UBD3-800TV

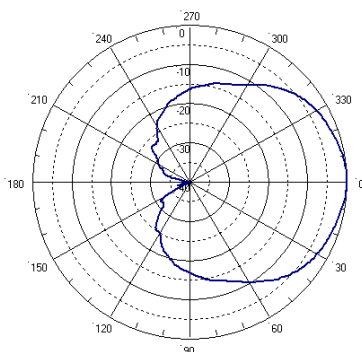
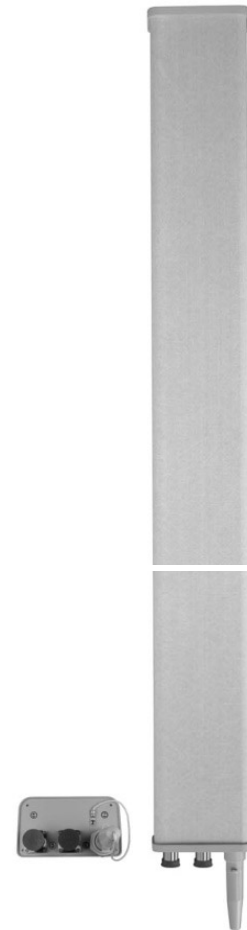
1710 – 2690
H70° V6.2°
Variable Tilt
2° - 10°

### ELECTRICAL SPECIFICATIONS

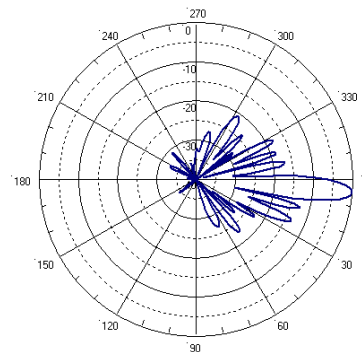
Antenna Model	UBD3-800TV
Polarization	±45°
Frequency (MHz)	<b>1710-2690</b>
Horizontal Beamwidth	70°
Vertical Beamwidth	6.2°
Gain (dBi)	17.5
Vertical Electrical Tilt	VARIABLE 2°-10°
Upper Sidelobe Suppression for the 1 <sup>st</sup> lobe above main beam (dB)	15
Front-to-Back Ratio @ 180° ± 20° (dB)	25
VSWR	< 1.5 : 1
Cross Polar Ratio @ ± 60° (dB) <i>Typically</i>	7
Isolation Between Ports	> 30
Maximum Power Per Input (W)	160
Intermodulation (dBc)	< - 150
Impedance (Ω)	50

### MECHANICAL SPECIFICATIONS

Connectors	2 X 7/16 Female
Connector Position	Bottom
Survival Wind Speed km/h	200
Front Windload N @ 160 km/h	278
Lateral Windload N @ 160 km/h	142
Radome Color	Grey, paintable
Humidity	100%
Antenna Weight kg (lb)	8 (18)
Antenna Dimension mm (in) H X W X D	1350 X 160 X 90 (53 x 6 x 4)



H&V Pattern



*This antenna is available with variable electrical tilt 4°-14°*