

SINGLE BAND PANEL ANTENNA BAND 850 MHz

AT41-685TX

824 - 896

H88° V7.8°

Fixed Tilt 0°, 2°, 4°, 6°

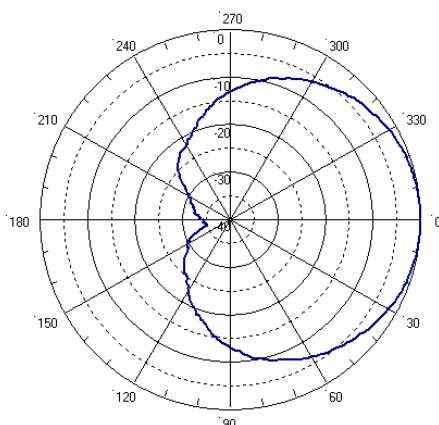
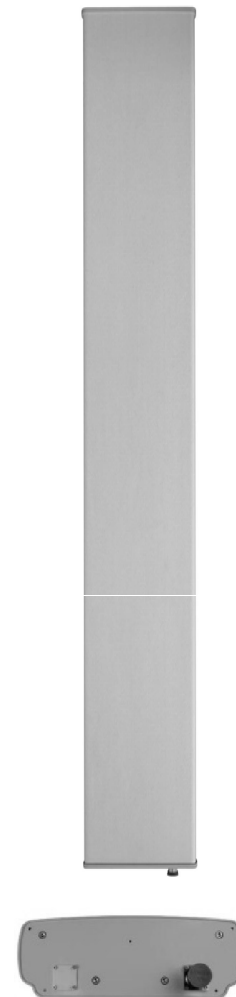
ELECTRICAL SPECIFICATIONS

BAND 850

Antenna Model	AT41-685TX
Polarization	Vertical
Frequency (MHz)	824 - 896
Horizontal Beamwidth	88°
Vertical Beamwidth	7.8°
Gain (dBi)	16
Vertical Electrical Tilt	FIXED 0°, 2°, 4°, 6°
Upper Sidelobe Suppression for the 1 st lobe above main beam (dB)	22
Front-to-Back Ratio /Cpol @ ± 20° (dB)	> 23
VSWR	< 1.4 : 1
Maximum Power Per Input (W)	500
Intermodulation (dBc)	< - 150
Impedance (Ω)	50

MECHANICAL SPECIFICATIONS

Connectors	1 X 7/16 Female
Connector Position	Bottom
Survival Wind Speed km/h (mph)	200 (125)
Front Windload N @ 160 km/h (lbs @100 mph)	1350 (303)
Lateral Windload N @ 160 km/h (lbs @100 mph)	270 (61)
Radome Color	Grey, paintable
Humidity	100%
Antenna Weight kg (lbs)	22 (48)
Antenna Dimension in (mm) H X W X D	2530 X 325 X 115 (100 X 13 X 5)



H&V Pattern

