

SINGLE BAND PANEL ANTENNA

BAND 850 MHz

AT41-684TV

824 - 896
H64° V7.4°
Variable Tilt 0°-8°

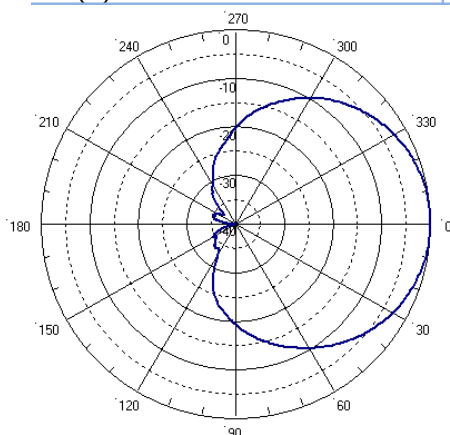
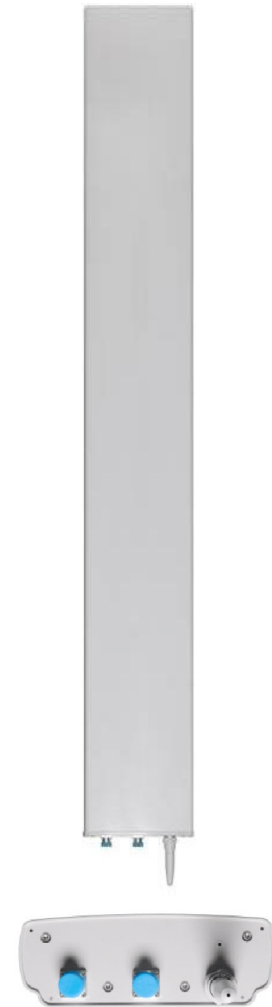
ELECTRICAL SPECIFICATIONS

BAND 850

Antenna Model	AT41-684TV		
Polarization	± 45°		
Frequency (MHz)	824 - 896		
Horizontal Beamwidth	64°		
Vertical Beamwidth	7.4°		
Gain (dBi)	T0	T4	T8
	16.5	17	17
Vertical Electrical Tilt	VARIABLE 0°-8°		
Upper Sidelobe Suppression for the 1 st lobe above main beam (dB)	T0	T4	T8
	23	23	20
Front-to-Back Ratio @180° ± 20° (dB)	> 25		
VSWR	< 1.4 : 1		
Cross Polar Ratio @ ± 60° (dB) <i>Typically</i>	> 7		
Isolation Between Ports	> 30		
Maximum Power Per Input (W)	500		
Intermodulation (dBc)	< - 150		
Impedance (Ω)	50		

MECHANICAL SPECIFICATIONS

Connectors	2 X 7/16 Female	
Connector Position	Bottom	
Survival Wind Speed	km/h (mph)	200 (125)
Front Windload	N @ 160 km/h (lbs @100 mph)	1350 (303)
Lateral Windload	N @ 160 km/h (lbs @100 mph)	270 (61)
Radome Color	Grey, paintable	
Humidity	100%	
Antenna Weight	kg (lbs)	24 (53)
Antenna Dimension	mm (in) H X W X D	
	2530 X 325 X 115 (100 X 13 X 5)	



H&V Pattern

