

SINGLE BAND PANEL ANTENNA

BAND 700 MHz

AT39-685TX

698 - 896
H90° V8.5°
Fixed Tilt 0°,2°,4°,6°

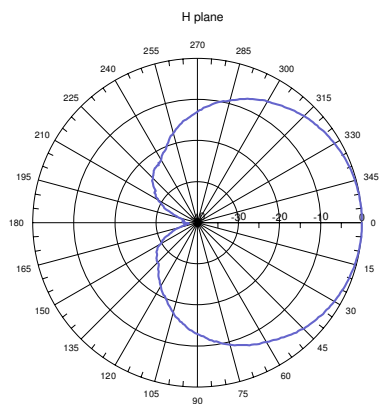
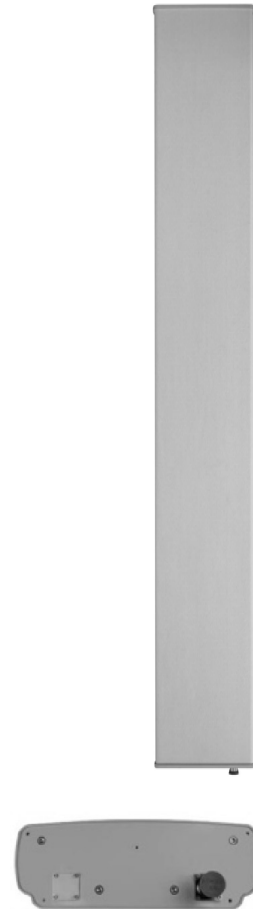
ELECTRICAL SPECIFICATIONS

BAND 700

Antenna Model	AT39-685TX
Polarization	Vertical
Frequency (MHz)	698-896
Horizontal Beamwidth	90°
Vertical Beamwidth	8.5°
Gain (dBi)	15.2
Vertical Electrical Tilt	FIXED 0°,2°,4°,6°
Upper Sidelobe Suppression for the 1 st lobe above main beam (dB)	18
Front-to-Back Ratio @ 180° ± 20° (dB)	25
VSWR	< 1.4 : 1
Maximum Power Per Input (W)	500
Intermodulation (dBc)	< - 150
Impedance (Ω)	50

MECHANICAL SPECIFICATIONS

Connectors	1 X 7/16 Female
Connector Position	Bottom
Survival Wind Speed km/h (mph)	200 (125)
Front Windload N @ 160 km/h (lbs @100 mph)	1350 (303)
Lateral Windload N @ 160 km/h (lbs @100 mph)	270 (61)
Radome Color	Grey, paintable
Humidity	100%
Antenna Weight kg (lbs)	22 (48)
Antenna Dimension mm (in) H X W X D	2530 X 325 X 115 (100 X 13 X 5)



H&V Pattern

