

# MULTI BAND PANEL ANTENNA (TRIPLE) BAND 850 + 2x BROADBAND 1710 – 2170 MHz

## TGA3D3-800TV

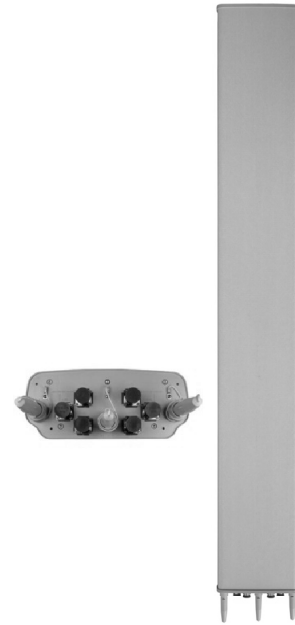
824 - 896	2 X 1710 - 2170		
824 - 896	1710-1880	1850-1990	1920-2170
H72° V7.3°	H63° V7°	H64° V6.6°	H63° V6.4°
Variable Tilt 0° - 7°	Variable Tilt 0° - 10°	Variable Tilt 0° - 10°	Variable Tilt 0° - 10°

### ELECTRICAL SPECIFICATIONS

BAND 850

2 X BROADBAND 1710-2170 MHz

Antenna Model	TGA3D3-800TV			
Polarization	+/- 45°			
	824-896	2 X (1710 – 2170)		
Frequency	824-896	1710-1880	1850-1990	1920-2170
Horizontal Beamwidth	72°	63°	64°	63°
Vertical Beamwidth	7.3°	7°	6.6°	6.4°
Gain (dBi)				
<b>Bottom antenna</b>	16	17.5	17	17
<b>Top Antenna</b>		17	16.5	16.5
Vertical Electrical Tilt	VARIABLE 0°-7°	VARIABLE 0°-10°	VARIABLE 0°-10°	VARIABLE 0°-10°
Upper Sidelobe Suppression for the 1 <sup>st</sup> lobe above main beam (dB)	<b>T0 T3 T7</b> 18 17 22	<b>T0 T5 T10</b> 19 17 18	<b>T0 T5 T10</b> 20 18 16	<b>T0 T5 T10</b> 18 16 16
Front-to-Back Ratio @ 180° ± 20° (dB)	>26	>23	>25	>25
VSWR	< 1.5 : 1	< 1.5 : 1	< 1.5 : 1	< 1.5 : 1
Cross Polar Ratio @ -3°dB Beamwidth <i>Typically</i>	>15	>15	>15	>15
Isolation between Ports (dB)	>30	>30	>30	>30
Interband Isolation (dB)	> 40 (824-896//1710-2170) > 35 (1710-2170//1710-2170)			
Maximum Power Per Input (W)	500	250		
Intermodulation (dBc)	< - 150			
Impedance (Ω)	50			



### MECHANICAL SPECIFICATIONS

Connectors	6 x 7/16 Female
Connector Position	Bottom
Survival Wind Speed km/h (mph)	200 (125)
Front Windload N @ 160 km/h (lbs @ 100 mph)	1400 (315)
Lateral Windload N @ 160 km/h (lbs @ 100 mph)	330 (74)
Radome Color	Grey, paintable
Humidity	100%
Antenna Weight kg (lbs)	35 (77)
Antenna Dimension mm (in) H X W X D	2615 X 350 X 145 (103 X 14 X 6)

