

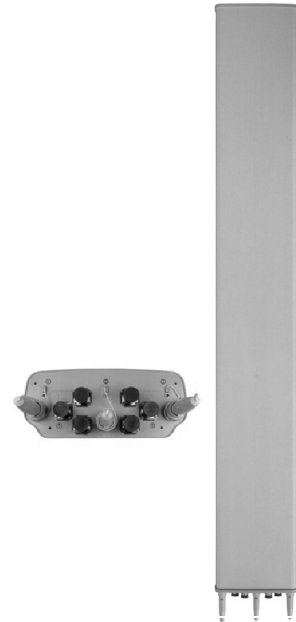
# MULTI BAND PANEL ANTENNA (TRIPLE) BAND (800 + 900) + 2x BROADBAND 1710 – 2170 MHz

## LM2D3-600 TV

(790 – 960)	2 X (1710 – 2170)
H64° V11°	H65° V6.6°
Variable Tilt 2° - 10°	Variable Tilt 2° - 12°

### ELECTRICAL SPECIFICATIONS

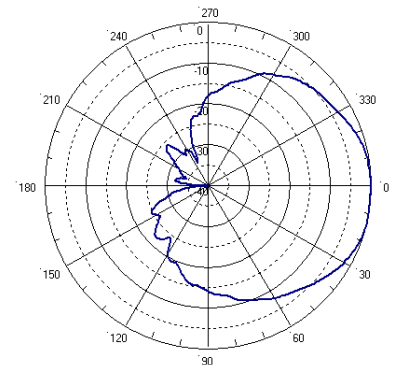
Antenna Model	LM2D3-600TV	
Polarization	± 45°	
Frequency (MHz)	<b>(790 – 960)</b>	<b>2 X (1710 – 2170)</b>
Horizontal Beamwidth	64°	65°
Vertical Beamwidth	11°	6.6°
Gain (dBi)	15.5	17
Vertical Electrical Tilt	VARIABLE 0°-10°	VARIABLE 2°-12°
Upper Sidelobe Suppression for the 1 <sup>st</sup> lobe above main beam (dB)	17	17
Front-to-Back Ratio @ 180° ± 20° (dB)	> 25	> 25
VSWR	< 1.5 : 1	< 1.5 : 1
Cross Polar Ratio @ -3° (dB) <i>Typically</i>	> 12	> 10
Isolation between Ports (dB)	> 30	> 30
Interband Isolation (dB)	> 40 (790-960//1710-2170) > 30 (1710-2170//1710-2170)	
Maximum Power Per Input (W)	500	250
Intermodulation (dBc)	< - 150	
Impedance (Ω)	50	



### MECHANICAL SPECIFICATIONS

Connectors	6 X 7/16 Female
Connector Position	Bottom
Survival Wind Speed (Km/h)	200
Front Windload (N @ 160 km/h)	1050
Lateral Windload (N @ 160 km/h)	260
Radome Color	Grey, paintable
Humidity	100%
Antenna Weight (Kg)	30
Antenna Dimension (mm) H X W X D	2000 x 350 x 150

H&V Pattern/ Broadband



H&V Pattern/ Low band

