

# MULTI BAND PANEL ANTENNA (TRIPLE)

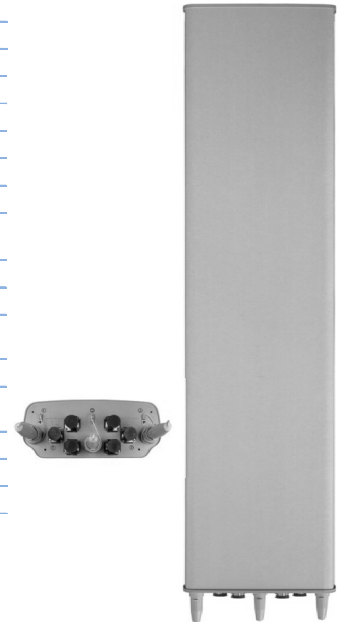
## 2x BAND (800 + 900) + BROADBAND 1710 – 2170 MHz

### L2MD3-800TV

2 x (790-960)	1710 – 2170
H68° V7.7°	H69° V6.2°
Variable Tilt 2° - 10°	Variable Tilt 2° - 10°

#### ELECTRICAL SPECIFICATIONS

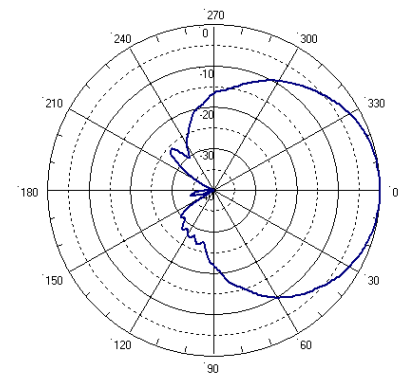
Antenna Model	L2MD3-800TV		
Polarization	± 45°		
Frequency	<b>790 – 960</b>	<b>790 – 960</b>	<b>1710 – 2170</b>
Horizontal Beamwidth	68°	69°	65°
Vertical Beamwidth	7.7°	7.5°	6.2°
Gain (dBi)	16.4	16.6	17.5
Vertical Electrical Tilt	VARIABLE 2° - 10°	VARIABLE 2° - 10°	VARIABLE 2° - 10°
Upper Sidelobe Suppression for the 1 <sup>st</sup> lobe above main beam (dB)	15	15	15
Front-to-Back Ratio @ 180° ± 20° (dB)	> 25	> 25	> 25
VSWR	< 1.5 : 1	< 1.5 : 1	< 1.5 : 1
Cross Polar Ratio @ -3°dB Beamwidth Typically	>10	>10	>10
Isolation between Ports (dB)	> 25	> 25	> 30
Interband Isolation (dB)	>35 (790-960 // 1710-2170) >27 (790-960 // 790-960)		
Maximum Power Per Input (W)	> 500		> 250
Intermodulation (dBc)	< - 150		
Impedance (Ω)	50		



#### MECHANICAL SPECIFICATIONS

Connectors	6 X 7/16 Female
Connector Position	Bottom
Survival Wind Speed km/h	200
Front Windload N @ 160 km/h	1880
Lateral Windload N @ 160 km/h	390
Radome Color	Grey, paintable
Humidity	100%
Antenna Weight kg (lb)	43 (98)
Antenna Dimension mm (in) H X W X D	2700 X 450 X 200 (108 x 18 x 8)

H&V Pattern/ Broadband



H&V Pattern/ Low band

