

MULTI BAND PANEL ANTENNA (DUAL) BAND 900 + BROADBAND 1710 – 2170 MHz

TGD3-1000TV

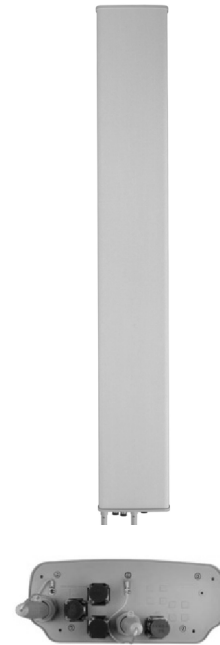
870 - 960	1710 - 2170		
870 - 960	1710-1880	1850-1990	1920-2170
H60° V7.5°	H64° V4.8°	H62° V4.5°	H60° V4.3°
Variable Tilt 2° - 10°	Variable Tilt 0° - 10°	Variable Tilt 0° - 10°	Variable Tilt 0° - 10°

ELECTRICAL SPECIFICATIONS

BAND 900

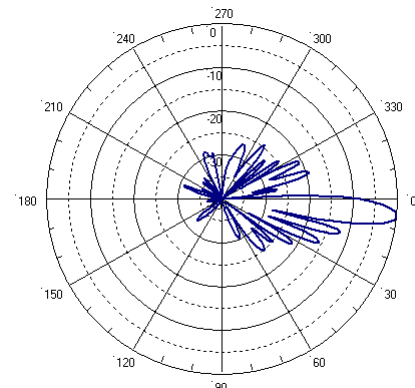
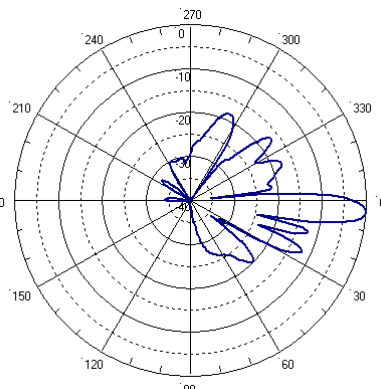
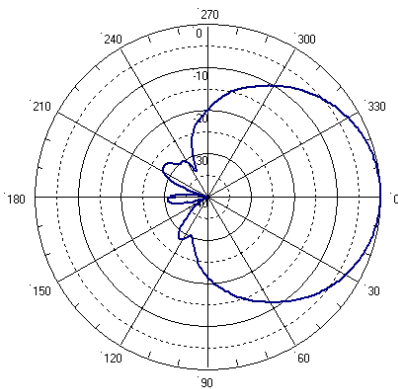
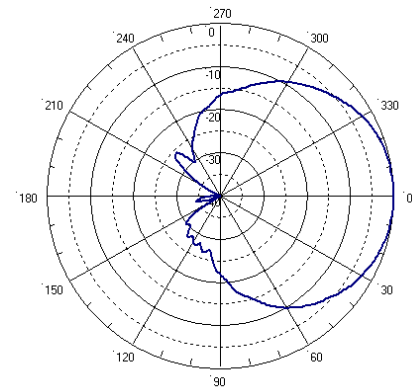
BROADBAND 1710-2170 MHz

Antenna Model	TGD3-1000TV			
Polarization	± 45°			
Frequency	870 - 960		1710 - 2170	
	870 - 960	1710-1880	1850-1990	1920-2170
Horizontal Beamwidth	60°	64°	62°	60°
Vertical Beamwidth	7.5°	4.8°	4.5°	4.3°
Gain (dBi)	17	18.6	19.1	20.2
Vertical Electrical Tilt	VARIABLE 2°-10°	VARIABLE 0°-10°	VARIABLE 0°-10°	VARIABLE 0°-10°
Upper Sidelobe Suppression for the 1 st lobe above main beam (dB)	T2 T6 T10 19 20 17	T2 T6 T10 20 18 16	T2 T6 T10 20 20 18	T2 T6 T10 20 18 18
Front-to-Back Ratio @ 180° ± 20° (dB)	> 27	> 25	> 24	> 24
VSWR	< 1.5 : 1	< 1.5 : 1	< 1.5 : 1	< 1.5 : 1
Cross Polar Ratio @ -3°dB Beamwidth <i>Typically</i>	>15	>15	>15	>15
Isolation between Ports (dB)	> 30	> 30	> 30	> 30
Interband Isolation (dB)	> 40 (870-960//1710-2170)			
Maximum Power Per Input (W)	500	250		
Intermodulation (dBc)	< - 150			
Impedance (Ω)	50			



MECHANICAL SPECIFICATIONS

Connectors	4 X 7/16 Female
Connector Position	Bottom
Survival Wind Speed km/h (mph)	200 (125)
Front Windload N @ 160 km/h (lbs @ 100 mph)	1400 (315)
Lateral Windload N @ 160 km/h (lbs @ 100 mph)	330 (74)
Radome Color	Grey, paintable
Humidity	100%
Antenna Weight kg (lbs)	36 (79)
Antenna Dimension mm (in) H X W X D	2615 X 350 X 145 (103 X 14 X 6)



This antenna is available with variable electrical tilt 4°-14°