

MULTI BAND PANEL ANTENNA (DUAL) BAND (800 + 900) + ULTRA BROADBAND 1710 – 2690 MHz

LUD3-800TV

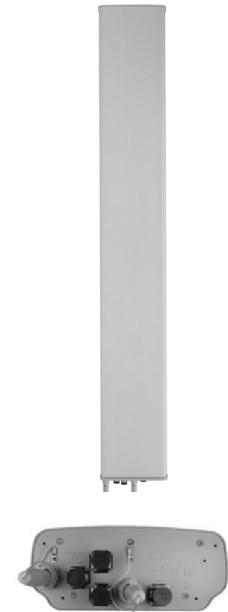
790-960	1710 – 2690
H62° V7.7°	H62.5° V6.2°
Variable Tilt 0° - 10°	Variable Tilt 2° - 10°

ELECTRICAL SPECIFICATIONS

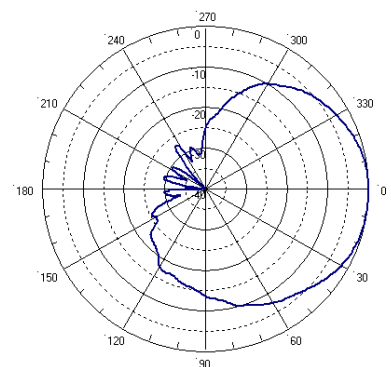
Antenna Model	LUD3-800TV			
Polarization	± 45°			
Frequency	790 - 960		1710 - 2690	
Horizontal Beamwidth	62°		62.5°	
Vertical Beamwidth	7.7°		6.2°	
Gain (dBi)	17		17.5	
Vertical Electrical Tilt	VARIABLE	0°-10°	VARIABLE	2°-10°
Upper Sidelobe Suppression for the 1 st lobe above main beam (dB)	16		15	
Front-to-Back Ratio @ 180° ± 20° (dB)	> 25		> 25	
VSWR	< 1.5 : 1		< 1.5: 1	
Cross Polar Ratio @ -3°dB Beamwidth <i>Typically</i>	>15		>15	
Isolation between Ports (dB)	> 30		> 30	
Interband Isolation (dB)	>40 (790-960 // 1710-2690)			
Maximum Power Per Input (W)	> 500		> 300	
Intermodulation (dBc)	< - 150			
Impedance (Ω)	50			

MECHANICAL SPECIFICATIONS

Connectors	4 X 7/16 Female		
Connector Position	Bottom		
Survival Wind Speed km/h	200		
Front Windload N @ 160 km/h	1400		
Lateral Windload N @ 160 km/h	350		
Radome Color	Grey, paintable		
Humidity	100%		
Antenna Weight kg (lb)	35 (77)		
Antenna Dimension mm (in) H X W X D	2600 X 350 X 150 (102 x 147 x 6)		



H&V Pattern/ Broadband



H&V Pattern/ Low band

