

# LOW VISUAL IMPACT – TRI SECTOR

## 3x (BAND 850 + 2x BROADBAND 1710 – 2170 MHz)

### SBTGA3-800TV-AV

3 X (Band 850 + 2 X Broadband 1710 - 2170)			
824 – 896	2 X 1710 - 2170		
824 – 896	1710-1880	1850-1990	1920-2170
H72° V7.5°	H65° V6.8°	H63° V6.6°	H60° V6.3°
Variable Tilt 0° - 7°	Variable Tilt 0° - 10°	Variable Tilt 0° - 10°	Variable Tilt 0° - 10°

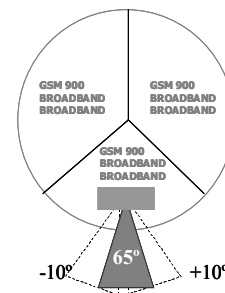
#### ELECTRICAL SPECIFICATIONS

3 X BAND 850

3 X (2 X BROADBAND 1710 – 2170 MHz)

Antenna Model	SBTGA3-800TV-AV			
Polarization	± 45°			
Frequency	3 X (824 – 896)	3 X (2 X 1710 – 2170)		
	824 – 896	1710 - 1880	1850 - 1990	1920 - 2170
Horizontal Beamwidth	72°	65°	63°	60°
Vertical Beamwidth	7.5°	6.8°	6.6°	6.3°
Gain (dBi)	16.3	17.2	17.3	17
Vertical Electrical Tilt	VARIABLE 0°-7°	VARIABLE 0°-10°	VARIABLE 0°-10°	VARIABLE 0°-10°
Variable Azimuth*	-10° to +10°			
Upper Sidelobe Suppression for the 1 <sup>st</sup> lobe above main beam (dB)	18	19	18	18
Front-to-Back Ratio @ 180° ± 20° (dB)	> 30	> 30	> 30	> 30
VSWR	< 1.5 : 1	< 1.5 : 1	< 1.5 : 1	< 1.5 : 1
Cross Polar Ratio @ ± 60° (dB)	> 12	> 12	> 12	> 12
Isolation between Ports (dB)	> 30	> 30	> 30	> 30
Interband Isolation (dB)		> 40 (824-896//1710-2170)		> 30 (1710-2170//1710-2170)
Maximum Power Per Input (W)	500	250		
Intermodulation (dBc)		< - 150		
Impedance (Ω)		50		

Tri-Sector  
configuration  
with Variable  
Azimuth



#### MECHANICAL SPECIFICATIONS

Connectors	18 X 7/16 Female
Connector Position	Bottom
Survival Wind Speed km/h	200
Windload N @ 160 km/h	1050
Radome Color	Grey, paintable
Humidity	100%
Antenna Weight kg	172
Antenna Dimension mm H X W X D	Antenna Size: 2730 X 510 Service Module : 330 X 510

\* Fixed Azimuth optional

