

LOW VISUAL IMPACT – TRI SECTOR

DUAL BAND – 3x (BAND 850 + BAND 1850 – 2170 MHz)

SBTGA-800T -AV

3 X (Band 850 + Band 1850 - 2170)		
824 - 896	1850 - 2170	
824 - 896	1850-1990	1920-2170
H69° V7.8°	H63° V6.6°	H61° V6.3°
Variable Tilt 0° - 8°	Variable Tilt 0° - 10°	Variable Tilt 0° - 10°

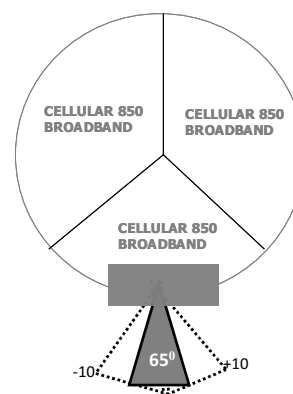
ELECTRICAL SPECIFICATIONS

3 X BAND 850

3 X BAND 1850-2170 MHz

Antenna Model	SBTGA-800TV-AV								
Polarization	± 45°								
Frequency	3 X (824 – 896)			3 X (1850 – 2170)					
	824 - 896	1850 - 1990	1920 - 2170						
Horizontal Beamwidth	69°	63°	61°						
Vertical Beamwidth	7.8°	6.6°	6.3°						
Gain (dBi)	T0 16	T4 16.5	T8 16	T0 17	T4 17.5	T8 17	T0 17.5	T4 17.5	T8 17
Vertical Electrical Tilt	VARIABLE 0°-8°			VARIABLE 0°-10°			VARIABLE 0°-10°		
Variable Azimuth *	-10° to +10°								
Upper Sidelobe Suppression for the 1 st lobe above main beam (dB)	T0 20	T4 20	T8 17	T0 19	T4 17	T8 17	T0 18	T4 17	T8 17
Front-to-Back Ratio @ 180° ± 20° (dB)	> 28			> 28			> 28		
VSWR	< 1.5 : 1			< 1.5 : 1			< 1.5 : 1		
Cross Polar Ratio @ ± 60° (dB) <i>Typically</i>	> 8			> 8			> 8		
Isolation between Ports (dB)	> 30			> 30			> 30		
Interband Isolation (dB)	> 40 (824-896//1850-2170)								
Maximum Power Per Input (W)	500			250					
Intermodulation (dBc)	< - 150								
Impedance (Ω)	50								

Tri-Sector configuration



MECHANICAL SPECIFICATIONS

Connectors	12 X 7/16 Female
Connector Position	Bottom
Survival Wind Speed km/h (mph)	200 (125)
Windload N @ 160 km/h (lbs @100 mph)	1000 (225)
Radome Color	Grey, paintable
Humidity	100%
Antenna Weight (kg)	150 (330)
Antenna Dimension (mm) H X D	Antenna Size: 2700 X 505 (106 X 20) Service Module: 295 X 510 (12 X 20)

* Fixed Azimuth optional

