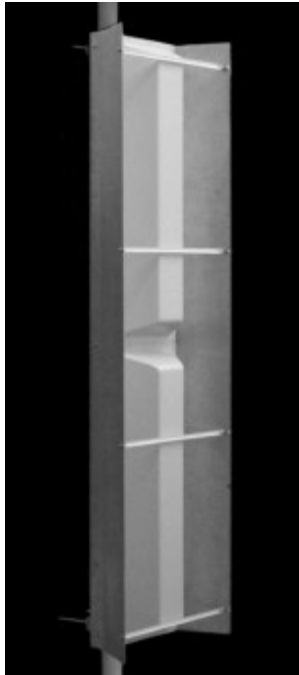


## TA-811-33 Sector

806-896, 824-896, 890-960 MHz



The TA-811-33 is a fixed pattern version of the TA-811 adjustable sector. It is enclosed in an aluminum base and has an ASA UV stabilized radome for superior performance and weatherability. Extremely low side lobes and up to 15 degrees of electrical downtilt make this a remarkably versatile antenna.

### Electrical Specifications

**Frequency Range:** 806-896, 824-896, 890-960 MHz  
**Gain:** 17 dBd @ 33°  
**VSWR:** 1.5:1 max. 1.35:1 typical  
**Front to Back Ratio:** 25 dB min. 30 dB typical  
**Polarization:** Vertical  
**Power Rating:** 500 Watts  
**H-Plane Beamwidth:** 33 degrees  
**E-Plane Beamwidth:** 8.5 degrees  
**Electrical Downtilt:** 0°, 2°, 4°, 5°, 6°, 10°, 13°, 15°  
**Cross Pol. Discrimination:** 20 dB min.  
**Impedance:** 50 ohms nominal  
**Termination:** N female (7/16 optional)

Typical mid band values. (For details, contact factory)  
 Specifications subject to change without notice

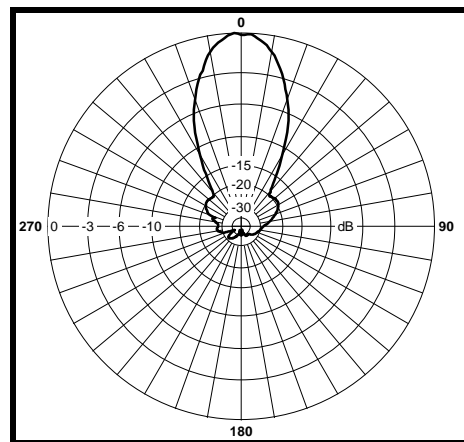
### Mechanical Specifications

**Length:** 96 in. (2438 mm)  
**Width:** 30 in. (762 mm)  
**Depth:** 13 in. (330 mm)  
**Weight (incl. Clamps):** 72 lb. (33 kg)  
**Rated Wind Velocity:** 125 mph (201 km/h)  
**Hor. Thrust at rated wind:** 1121 lb. (508 kg)  
**Mechanical Tilt:** 0 degrees fixed  
**Mounting (O.D.):** 1.75 - 4.5 in. (44.5 - 114 mm)

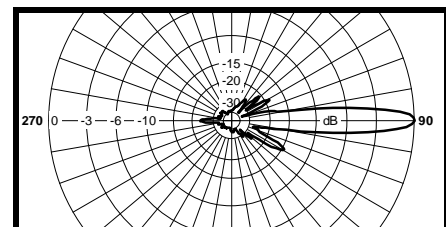
### Materials

**Radiating Elements:** Irridited aluminum  
**Reflector:** Irridited aluminum  
**Radome:** Gray UV stabilized ASA  
**Clamps:** HDG and EDZ steel

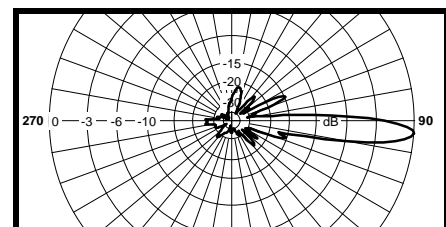
H-Plane



E-Plane



T0



T4