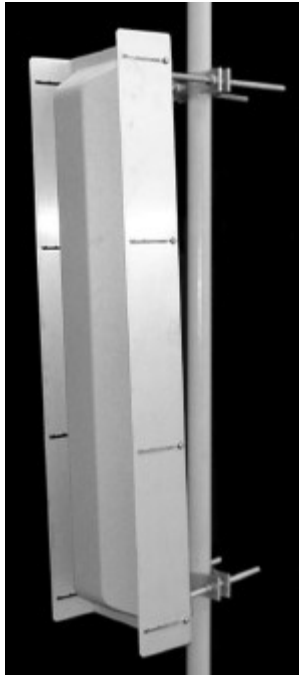




TA-803 Adjustable Sector

806-896, 824-896, 890-960 MHz



The TA-803 adjustable sector is a broadband dipole array, enclosed in an aluminum base with an ASA UV stabilized radome for superior performance and weatherability. Extremely low side lobes, an adjustable azimuth pattern and up to 15 degrees of mechanical downtilt make this a remarkably versatile antenna.

Electrical Specifications

Frequency Range: 806-896, 824-896, 890-960 MHz
Gain: 12.5 dBd @ 60°, 11 dBd @ 90°
 10.75 dBd @ 105°, 10.5 dBd @ 120°
VSWR: 1.5:1 max. 1.35:1 typical
Front to Back Ratio: 25 dB min. 30 dB typical
Polarization: Vertical
Power Rating: 500 Watts
H-Plane Beamwidth: 60, 90, 105, 120 degrees
E-Plane Beamwidth: 18 degrees
Electrical Downtilt: 0°, 4°, 6°, 8°, 10°, 18°
Cross Pol. Discrimination: 20 dB min.
Impedance: 50 ohms nominal
Termination: N female (7/16 optional)

Typical mid band values. (For details, contact factory)
 Specifications subject to change without notice

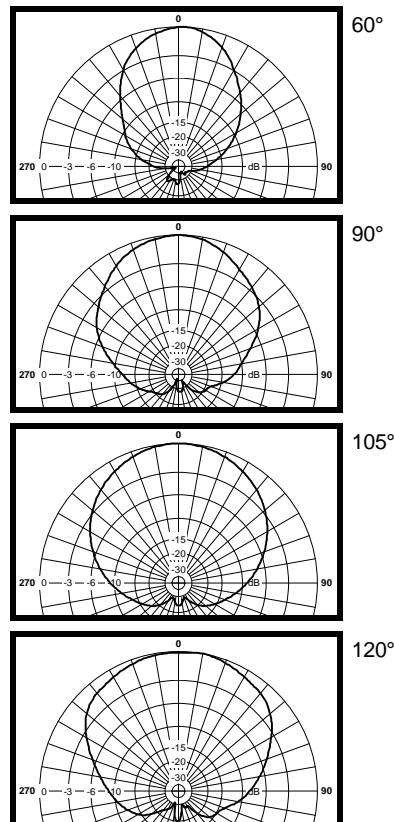
Mechanical Specifications

Length: 48 in. (1220 mm)
Width: 13 in. (330 mm)
Depth: 8 in. (203 mm)
Weight (incl. Clamps): 34 lb. (15.4 kg)
Rated Wind Velocity: 125 mph (200 km/h)
Hor. Thrust at rated wind: 269 lb. (122.1 kg)
Mechanical Tilt: 0 - 15 degrees (w/ TMC-104)
Mounting (O.D.): 1.75 - 4.0 in. (44.5 - 102 mm)

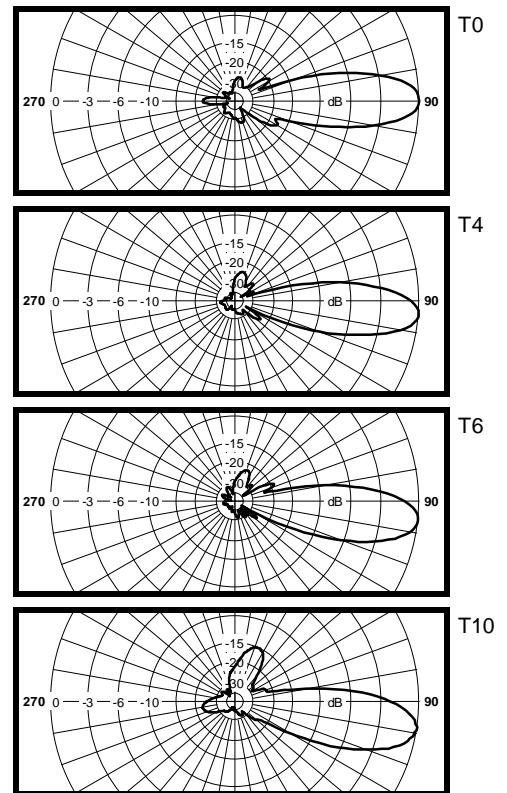
Materials

Radiating Elements: Irridited aluminum
Reflector: Irridited aluminum
Radome: Gray UV stabilized ASA
Clamps: HDG steel

H-Plane



E-Plane



Rev. 1.3

2005-02-15

500 Van Buren Street
 P.O. Box 550
 Kemptville, ON K0G 1J0
 Canada



ISO 9001:2000
 CGSB Registered
 Certificate 961004

T: 613-258-5928
 T: 877-ANTENNA
 F: 613-258-7418
 www.tiltek.com