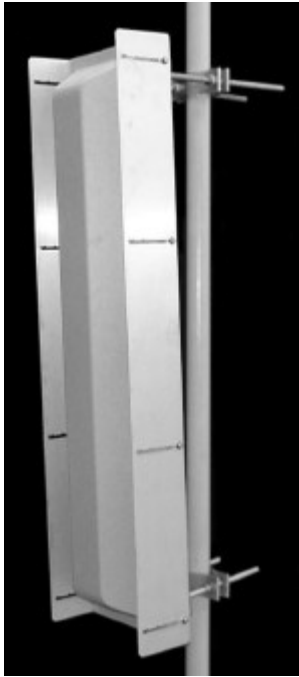


# TA-703 Adjustable Sector

## 698 - 806 MHz



The TA-703 is a medium gain field adjustable sector for use in the 698-806 MHz licensed band. The patented side panel design allows the user to choose a 65, 90, or 110 degree azimuth pattern to optimize coverage. The excellent front to back ratio and side lobe reduction minimizes inter-sector interference. The robust design and versatility ensure superior performance and weatherability.

### Electrical Specifications

**Frequency Range:** 698 - 806 MHz  
**Gain:** 13 dBi (11 dBd) @ 65°, 12 dBi (10 dBd) @ 90°  
 11 dBi (9 dBd) @ 110°  
**VSWR:** 1.5:1 max.  
**Front to Back Ratio:** 22dB @ 65°, 20dB @ 90°  
 18dB @ 110°  
**Polarization:** Vertical  
**Power Rating:** 250 Watts  
**H-Plane Beamwidth:** 65, 90, 110 degrees  
**E-Plane Beamwidth:** 21 degrees  
**Cross Pol. Discrimination:** 25 dB typical  
**Impedance:** 50 ohms nominal  
**Termination:** N female

Typical mid band values. (For details, contact factory)  
 Specifications subject to change without notice

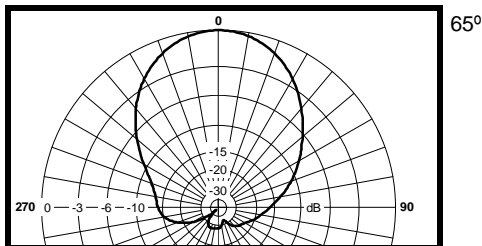
### Mechanical Specifications

**Length:** 48 in. (1220 mm)  
**Width:** 13 in. (330 mm)  
**Depth:** 8 in. (203 mm)  
**Weight (incl. Clamps):** 35 lb. (15.9 kg)  
**Rated Wind Velocity:** 125 mph (200 km/h)  
**Hor. Thrust at rated wind:** 269 lb. (122.1 kg)  
**Mechanical Tilt:** 0 - 15 degrees  
**Mounting (O.D.):** 1.75 - 4.0 in. (44.5 - 102 mm)

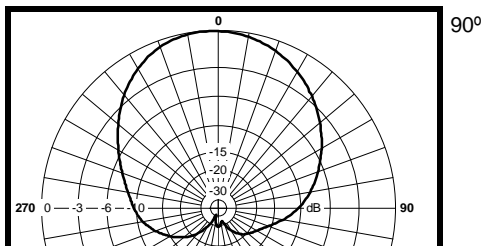
### Materials

**Radiating Elements:** Irridited aluminum  
**Reflector:** Irridited aluminum  
**Radome:** Gray UV stabilized ASA  
**Clamps:** HDG steel

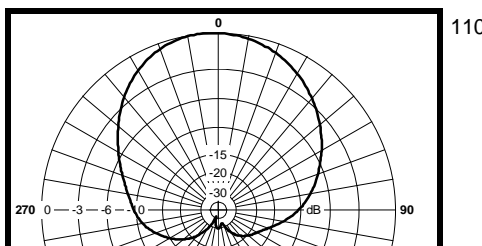
H-Plane



65°



90°



110°

E-Plane

