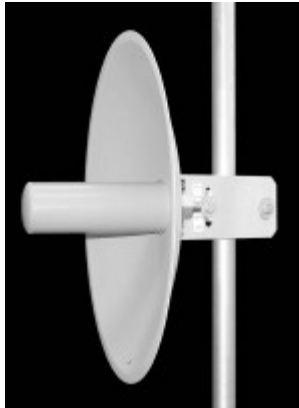


TA-3418 Solid Parabolic

3400-3700 MHz



TA-3418



TA-3418R

The TA-3418 is an 18 inch diameter solid parabolic antenna. The antenna complies with ETSI EN 302 085 V1.1.2 Section 6.1 TS3 standard. The TA-3418 feed is bolted to the aluminum reflector so the polarization can easily be changed in the field by rotating the antenna through 90 degrees. A full radome (TA-3418R) is also available for extreme weather conditions.

Electrical Specifications

Frequency Range: 3400-3700 MHz
Gain: 21 dBi
VSWR: 1.5:1 max.
Front to Back Ratio: 25 dB min.
Polarization: Vertical / Horizontal
Power Rating: 50 Watts
H-Plane Beamwidth: 12 degrees
E-Plane Beamwidth: 12 degrees
Cross Pol. Discrimination: 20 dB min.
Impedance: 50 ohms nominal
Termination: N female

Typical mid band values. (For details , contact factory)
 Specifications subject to change without notice

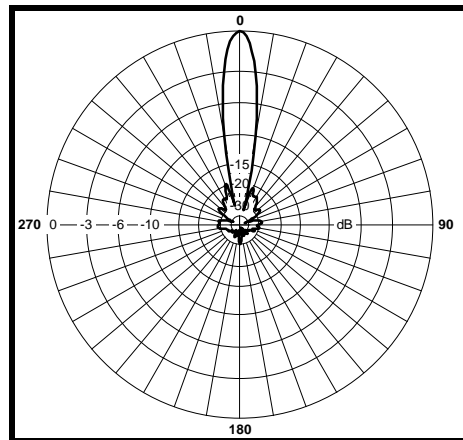
Mechanical Specifications

Diameter: 19.25 in. (489 mm)
Depth: 8 in. (204 mm)
Weight (Incl. Clamps): 12 lb. (505 kg)
Rated Wind Velocity: 125 mph (200 km/h)
Hor. Thrust at rated wind: 136 lb. (61.8 kg)
 with radome: 69 lb. (31.4 kg)
Mechanical Tilt: 0 ± 10 degrees
Mounting (O.D.): 1.75 - 4.0 in. (44.5 - 102 mm)

Materials

Radiating Elements: Tin plated copper on PCB
Reflector: Irridated aluminum
Radome: Gray UV stabilized ASA
Clamps: Aluminum and HDG steel

H-Plane



E-Plane

