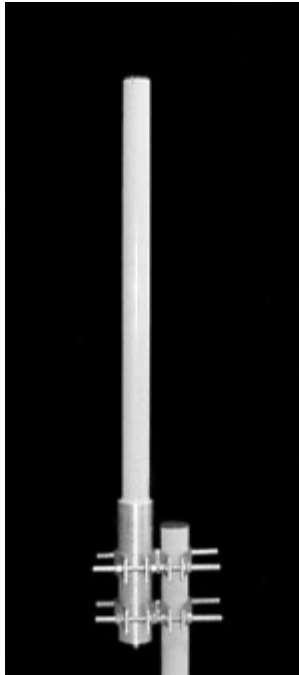




LANtenna Series

TA-2450 Omnidirectional

2400-2483 MHz



The TA-2450 is a 10 dBi omnidirectional antenna consisting of center fed collinear dipoles in a UV stabilized fiberglass radome. The antenna is designed for severe weather conditions and is at DC ground to aid in lightning protection.

Electrical Specifications

Frequency Range: 2400-2483 MHz
Gain: 10 dBi
VSWR: 1.5:1 max.
Polarization: Vertical
Power Rating: 50 Watts
H-Plane Beamwidth: 360 degrees
E-Plane Beamwidth: 8 degrees
Cross Pol. Discrimination: 20 dB min.
Impedance: 50 ohms nominal
Termination: N female

Typical mid band values. (For details, contact factory)
Specifications subject to change without notice

Mechanical Specifications

Length: 48 in. (1219 mm)
Diameter: 2.25 in. (57 mm)
Weight (Incl. Clamps): 15 lb. (6.8 kg)
Rated Wind Velocity: 125 mph (200 km/h)
Hor. Thrust at rated wind: 31 lb. (14.1 kg)
Mounting (O.D.): 1.75 - 4.0 in. (44.5 - 102 mm)

Materials

Radiating Elements: Copper
Radome: Gray UV stabilized fiberglass
Clamps: HDG steel

E-Plane

