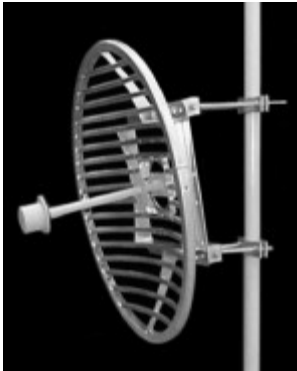


LANtenna Series

TA-2436 Grid Parabolic

2400-2483 MHz



The TA-2436 is a grid parabolic antenna with a broadband dipole horn feed which is sealed for superior weatherability. The antenna is at DC ground to aid in lightning protection. This antenna is extremely rugged and is designed to provide superior performance in any conditions.

Electrical Specifications

Frequency Range: 2400-2483 MHz
Gain: 24.5 dBi
VSWR: 1.5:1 max.
Front to Back Ratio: 30 dB min.
Polarization: Vertical or Horizontal
Power Rating: 200 Watts
H-Plane Beamwidth: 9 degrees
E-Plane Beamwidth: 10 degrees
Cross Pol. Discrimination: 30 dB min.
Impedance: 50 ohms nominal
Termination: N female

Typical mid band values. (For details , contact factory)
 Specifications subject to change without notice

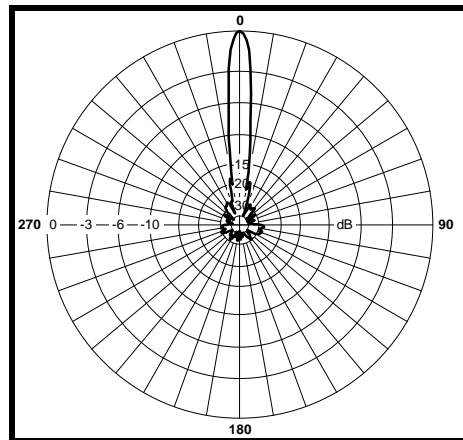
Mechanical Specifications

Diameter: 38.5 in. (978 mm)
Weight (Incl. clamps): 40 lb. (18.2 kg)
Rated Wind Velocity: 125 mph (200 km/h)
Hor. Thrust at rated wind: 177 lb. (80.5 kg)
Mechanical Tilt: 0 - 15 degrees
Mounting (O.D.): 1.75 - 4.5 in. (44.5 - 114 mm)

Materials

Radiating Elements: Aluminum
Reflector: Irridated aluminum
Clamps: HDG steel

H-Plane



E-Plane

