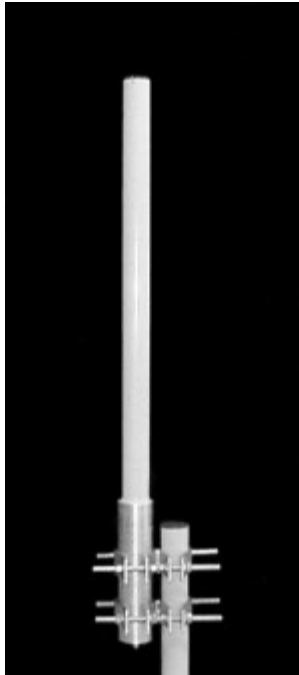


TA-2350 Omnidirectional 2300-2500 MHz



The TA-2350 is a 10 dBi omnidirectional antenna consisting of center fed collinear dipoles in a UV stabilized fiberglass radome. The antenna is made differently depending on the electrical downtilt (T0 / T2 / T4) which has an effect on certain specifications as noted below. The antenna is designed for severe weather conditions and is at DC ground to aid in lightning protection.

Electrical Specifications

Frequency Range: 2300-2500 MHz
Gain: 10 dBi
VSWR: 1.5:1 max.
Polarization: Vertical
Power Rating: 50 Watts
H-Plane Beamwidth: 360 degrees
E-Plane Beamwidth: 8 degrees
Electrical Downtilt: 0, 2, 4 degrees
Cross Pol. Discrimination: 20 dB min.
Impedance: 50 ohms nominal
Termination: N female

Typical mid band values. (For details , contact factory)
 Specifications subject to change without notice

Mechanical Specifications

Length: 46.5 in. (1181 mm) / 69 in. (1753 mm)
Diameter: 2.25 in. (57 mm)
Weight (Incl. Clamps): 15 lb. (6.8 kg) / 21 lb. (9.5 kg)
Rated Wind Velocity: 125 mph (200 km/h)
Hor. Thrust at rated wind: 31 lb. (14.1 kg)
Mounting (O.D.): 1.75 - 4.0 in. (44.5 - 102 mm)

Materials

Radiating Elements: Copper / Plated copper
Radome: Gray UV stabilized fiberglass
Clamps: HDG steel

E-Plane

