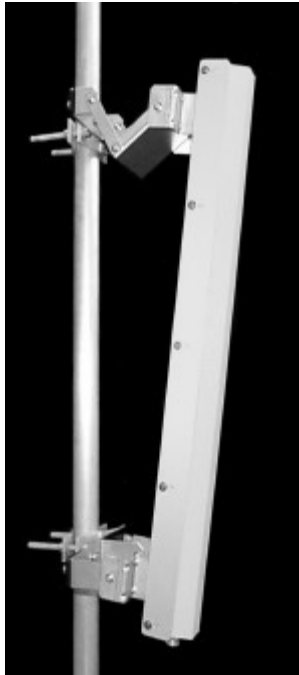




TA-2304-2-DAB

Medium Power Adjustable Sector

2330-2345 MHz



The TA-2304-2-DAB is a medium power vertically polarized sectoral antenna specifically designed for Digital Audio Broadcast transmission. The antenna is designed to provide field adjustable azimuth beamwidths of 45, 60, 90, 120, or 160 degrees by use of side panels. The antenna elements are at DC ground to aid in lightning protection.

Electrical Specifications

- Frequency Range:** 2330-2345 MHz
- Gain:** 17 dBi @ 45°, 16 dBi @ 60°, 14 dBi @ 90°
13 dBi @ 120°, 11.5 dBi @ 160°
- VSWR:** 1.3:1 max.
- Front to Back Ratio:** 15 dB @ 180° +/- 35°
- Polarization:** Vertical
- Power Rating:** 200 W avg., 800 W peak
- H-Plane Beamwidth:** 45°, 60°, 90°, 120°, 160°
- E-Plane Beamwidth:** 7.5 degrees
- Cross Pol. Discrimination:** 15 dB
- Impedance:** 50 ohms nominal
- Termination:** 7/16 DIN female

Typical mid band values. (For details , contact factory)
Specifications subject to change without notice

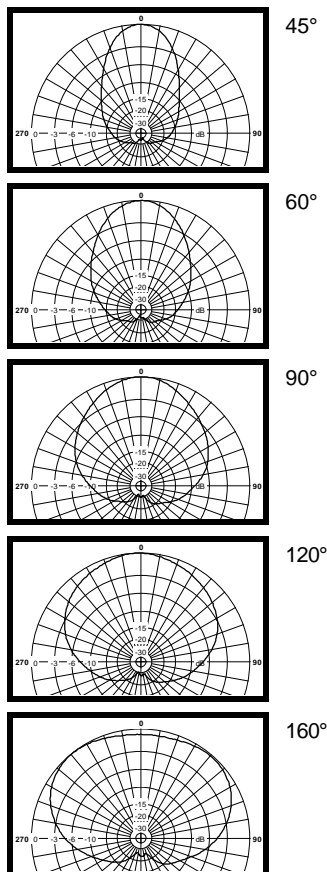
Mechanical Specifications

- Length:** 39.5 in. (1003 mm)
- Width:** 6.5 in. (165 mm) with 45° side panels
5.0 in. (127 mm) without 45° side panels
- Depth:** 3.5 in. (89 mm)
- Weight (incl. Clamps):** 8 lb. (3.6 kg)
- Rated Wind Velocity:** 125 mph (200 km/h)
- Hor. Thrust at rated wind:** 86 lb. (39 kg)
with 45° side panels: 113 lb. (51 kg)
- Mechanical Tilt:** +5° to -15°
- Mounting (O.D.):** 0.75 - 3.0 in. (19 - 76 mm)

Materials

- Radiating Elements:** Tin Plated copper on PCB
- Reflector:** Irridated aluminum
- Radome:** Gray UV stabilized ASA
- Clamps:** Aluminum and HDG steel

H-Plane



E-Plane

