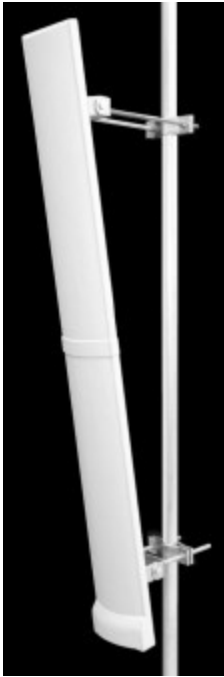


TA-1504-10-60 Dual Polarized Sector

1525-1560 / 1626-1661 MHz



The TA-1504-10-60 is a dual polarized 60 degree sectoral antenna with both LHCP and RHCP polarizations. The antenna has extremely high side lobe suppression and consists of a broadband patch array on an aluminum base with a UV stabilized ASA radome for superior weatherability. The antenna is at DC ground to aid in lightning protection.

Electrical Specifications

Frequency Range: 1525-1560 / 1626-1661 MHz
Gain: 2 x 16 dBic co-polarized
VSWR: 1.4:1 max.
Front to Back Ratio: > 25 dB
Polarization: Dual LHCP & RHCP
Power Rating: 2 x 250 Watts
H-Plane Beamwidth: 60 degrees
E-Plane Beamwidth: 7.5 degrees
Electrical Downtilt: 0 degrees
Axial Ratio: 2 dB Typ.
Impedance: 50 ohms nominal
Termination: 2 x N female (7/16 optional)

Typical mid band values. (For details , contact factory)
 Specifications subject to change without notice

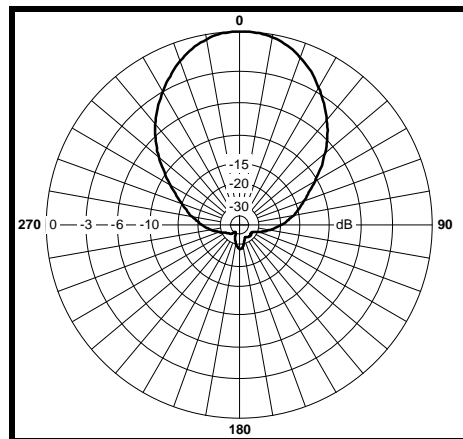
Mechanical Specifications

Length: 71 in (1803 mm)
Width: 8 in. (203 mm)
Depth: 3 in. (76 mm)
Weight (incl. Clamps): 27.0 lb. (12.3 kg)
Rated Wind Velocity: 125 mph (200 km/h)
Hor. Thrust at rated wind: 296 lb. (134 kg)
Mechanical Tilt: 0 - 6 degrees
Mounting (O.D.): 1.75 - 4.0 in. (44.5 - 102 mm)

Materials

Radiating Elements: Plated copper on PCB
Reflector: Irridited aluminum
Radome: Gray UV stabilized ASA
Clamps: HDG and EDZ steel

H-Plane



E-Plane

