



TIL-TEK Antennae



Solutions that Work



Affordable Quality



ISO 9001:2000



Reliability



Service



TIL-TEK Antennae Inc.
P.O. Box 550
Kemptonville, Ontario
Canada
K0G 1J0

December 14, 2006



Quality Management System (QMS):

As a leading supplier of communications solutions to a global marketplace, TIL-TEK is committed to achieving the highest possible quality in all of its products and services. Both our Manufacturing and Research & Development facilities in Canada are ISO 9001:2000 compliant and have been certified since 1996.

Quality is one of the cornerstones of customer value along with innovation, cost and service/support. All product leaves the plant having gone through a rigorous process with a final verification stamp indicating conformance to that process. TIL-TEK is an ISO 9001:2000 registered company. This worldwide standard covers our entire operation of the company from order entry to shipping, from product design to production. Quality will never be compromised either over the long term or for short term convenience.

TIL-TEK's Quality Management System (QMS) provides the guidance and controls for an effective process management system. By implementing and maintaining the QMS, we will consistently provide product that meets customer and applicable regulatory requirements.

Quality Policy:

TIL-TEK will strive to provide our customer with products and services that ensure a high level of customer loyalty and satisfaction. We are committed to a Quality Management System that supports and encourages a culture of customer focus, teamwork, continuous improvement and standards of excellence.

Quality Objectives:

Management has ensured its quality objectives are established and communicated within the company. The Quality Objectives are measurable and consistent with TIL-TEK's Quality Policy and include the requirements needed for planning product realization.

TIL-TEK is committed to:

- * Customer loyalty and satisfaction.
- * Product quality, delivery and service.
- * Continuous improvement of the Quality Management System.
- * Teamwork and standards of excellence.

2005-12-22

Warranty

The specifications on our product data sheets are for reference purposes only and may change at any time without prior notice. For exact specifications, the factory or an authorized representative should be contacted.

TIL-TEK products are warranted against defects in material and workmanship under normal use for a period of three years from the date of shipment from the factory. Authorization must be obtained from TIL-TEK prior to returning a product for warranty service and the product must be returned to TIL-TEK with all transportation charges prepaid. See RMA policy for details.

Warranty repair or replacement without charge will be made only after inspection at the factory shows a defect in material or workmanship. TIL-TEK will pay the return transportation charges, but all other expenses including duty, taxes, storage and all other transaction fees shall be paid by the customer. The warranty period shall not be extended beyond its original term with respect to any part or parts repaired or replaced by TIL-TEK.

TIL-TEK is in no event liable for consequential damages or other costs of any nature resulting from the use of the products it manufactures. TIL-TEK is not liable for replacement from the use of any products damaged by lightning. TIL-TEK is not liable for delays in or inability to fulfill contractual obligations when the causes thereof are beyond the reasonable control of TIL-TEK. TIL-TEK neither assumes nor authorizes any person to assume for it, any obligation or liability other than as herein expressly stated.

This limited warranty is in lieu of all other warranties, either expressed or implied.

2005-12-22

Return Material Authorization (RMA) Policy

TIL-TEK products are warranted against defects in material and workmanship under normal use for a period of three years from the date of shipment from the factory. A RMA number must be obtained from TIL-TEK prior to returning a product for warranty service. The product must be returned to TIL-TEK with all transportation charges prepaid.

Defective Antenna: Provided an antenna is found to be defective under the terms of the warranty, TIL-TEK will repair, replace and return the antenna at no charge to the customer.

No Fault Found: If, after evaluation, the antenna is found to still meet TIL-TEK's electrical and mechanical specifications:

- 1) The customer shall incur an evaluation charge of 25% of the list price or a minimum fee of \$80.00 CDN.
- 2) The customer is responsible to incur the return freight. The antenna will be returned via freight collect.

Note: If an advance replacement is sent and the returned antenna is found to have no fault, the customer will be invoiced for the new replacement and will incur the freight to have the antenna returned to them.

Products



| | |
|----------------|---------------|
| TA-700 Series | 698-806 MHz |
| TA-800 Series | 806-960 MHz |
| TA-900 Series | 901-940 MHz |
| TA-1400 Series | 1425-1535 MHz |
| TA-1800 Series | 1850-1990 MHz |
| TA-1880 Series | 1880-1930 MHz |
| TA-2100 Series | 2150-2700 MHz |
| TA-2300 Series | 2300-2500 MHz |
| TA-2400 Series | 2400-2483 MHz |
| TA-2500 Series | 2485-2690 MHz |
| TA-3400 Series | 3400-3700 MHz |
| TA-4900 Series | 4940-4990 MHz |
| TA-5200 Series | 5250-5875 MHz |
| TA-5400 Series | 5470-5875 MHz |
| TA-5700 Series | 5725-5875 MHz |

2006-01-31

TA-2503 Panel

2485-2690 MHz



The TA-2503 is a lower gain, vertically or horizontally polarized panel antenna incorporating a broadband full wave dipole in an aluminum base and UV stabilized radome. It is designed for severe weather conditions. The antenna is at DC ground to aid in lightning protection.

Electrical Specifications

Frequency Range: 2485-2690 MHz
Gain: 12 dBi
VSWR: 1.5:1 max.
Front to Back Ratio: 25 dB typical
Polarization: Vertical or Horizontal
Power Rating: 100 Watts
H-Plane Beamwidth: 50 degrees
E-Plane Beamwidth: 45 degrees
Impedance: 50 ohms nominal
Termination: N female

Typical mid band values. (For details , contact factory)
 Specifications subject to change without notice

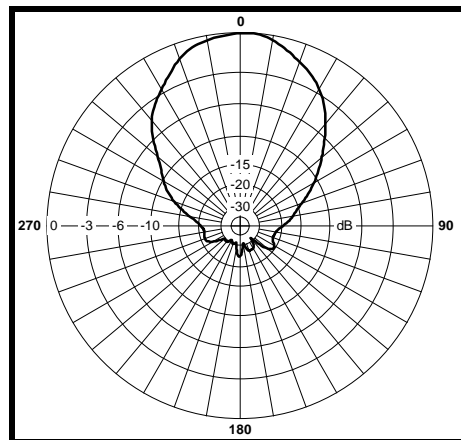
Mechanical Specifications

Length: 13.5 in. (343 mm)
Width: 6.75 in. (172 mm)
Depth: 2.75 in. (69.85 mm)
Weight (incl. Clamps): 5 lb. (2.3 kg)
Rated Wind Velocity: 125 mph (200 km/h)
Hor. Thrust at rated wind: 41 lb. (18.6 kg)
Mechanical Tilt: 0 +/- 11 degrees
Mounting (O.D.): 0.75 - 3.0 in. (19 - 76 mm)

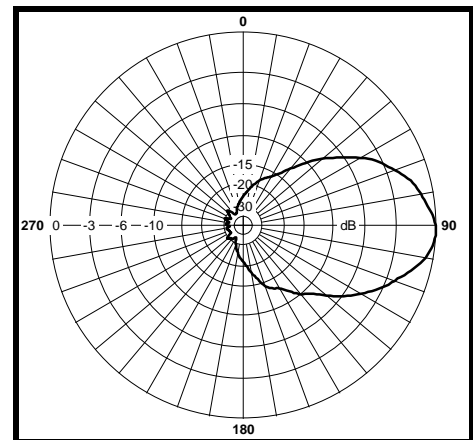
Materials

Radiating Elements: Irridited aluminum
Reflector: Irridited aluminum
Radome: Gray UV stabilized ASA
Clamps: HDG steel

H-Plane

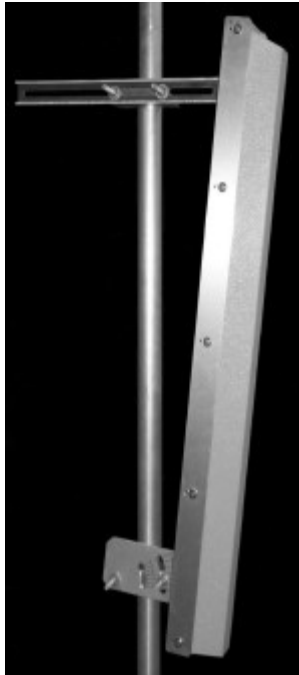


E-Plane



TA-2504-8 Adjustable Sector

2500-2700 MHz



The TA-2504-8 is a medium-gain vertically polarized sectoral antenna which has adjustable side panels to provide a 60 or a 90 degree azimuth pattern. The antenna consists of a printed dipole array enclosed in an aluminum base with a UV stabilized radome for superior weatherability. The antenna is at DC ground to aid in lightning protection.

Electrical Specifications

Frequency Range: 2500-2700 MHz
Gain: 16.5 dBi @ 60°, 15.5 dBi @ 90°
VSWR: 1.5:1 max.
Front to Back Ratio: 20 dB
Polarization: Vertical
Power Rating: 25 Watts
H-Plane Beamwidth: 60, 90 degrees
E-Plane Beamwidth: 8 degrees
Electrical Downtilt: 0, 2 degrees
Cross Pol. Discrimination: 18 dB (azimuth)
Impedance: 50 ohms nominal
Termination: N female (7/16 optional)

Typical mid band values. (For details, contact factory)
 Specifications subject to change without notice

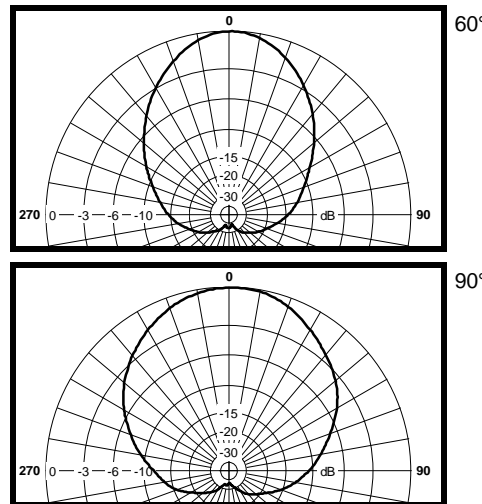
Mechanical Specifications

Length: 39.4 in. (1000mm)
Width: 5.1 in. (129.5 mm)
Depth: 3.75 in. (95.25 mm)
Weight (incl. Clamps): 9 lb. (4 kg)
Rated Wind Velocity: 125 mph (200 km/h)
Hor. Thrust at rated wind: 87 lb. (39.5 kg)
Mechanical Tilt: 0 - 10 degrees
Mounting (O.D.): 0.75 - 3.0 in. (19 - 76 mm)

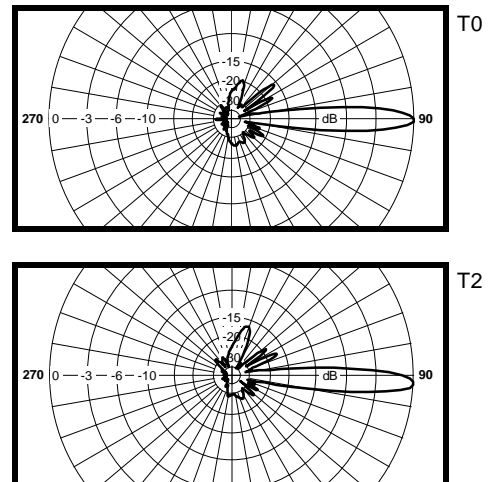
Materials

Radiating Elements: Plated copper on PCB
Reflector: Irridited aluminum
Radome: Gray UV stabilized ASA
Clamps: Aluminum, EDZ Steel (HDG Steel Opt)

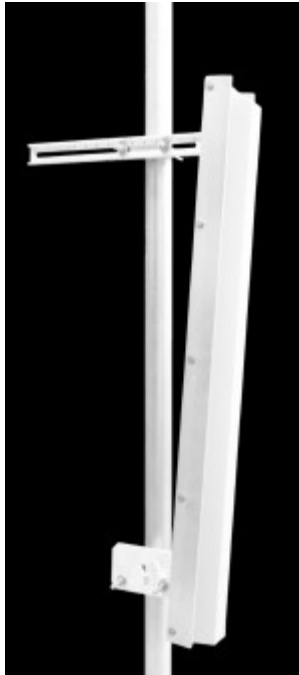
H-Plane



E-Plane



TA-2504-8-50 Sector 2500-2700 MHz



The TA-2504-8-50 is a medium-gain vertically polarized 50 degree sectoral antenna. It consists of a linear dipole array with fixed side panels to achieve the correct beamwidth. Radiating elements are protected by a weatherproof radome for operation under severe weather conditions and are at DC ground to aid in lightning protection.

Electrical Specifications

Frequency Range: 2500-2700 MHz
Gain: 17.5 +/- 1 dBi
VSWR: 1.5:1 max.
Front to Back Ratio: 25 dB min.
Polarization: Vertical
Power Rating: 50 Watts
H-Plane Beamwidth: 50° +/- 5°
E-Plane Beamwidth: 8° +/- 1°
Electrical Downtilt: 0, 2 degrees
Cross Pol. Discrimination: 15 dB (azimuth)
Impedance: 50 ohms nominal
Termination: N female (7/16 optional)

Typical mid band values. (For details, contact factory)
 Specifications subject to change without notice

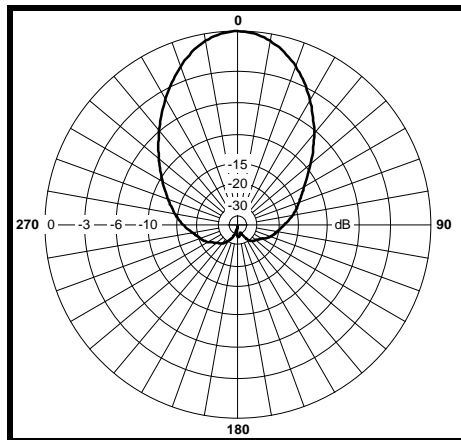
Mechanical Specifications

Length: 39.4 in. (1000 mm)
Width: 5.5 in. (140 mm)
Depth: 3.75 in. (95 mm)
Weight (incl. Clamps): 9 lb. (4 kg)
Rated Wind Velocity: 125 mph (200 km/h)
Hor. Thrust at rated wind: 93 lb. (42 kg)
Mechanical Tilt: 0 - 10°, 1° increments
Mounting (O.D.): 0.75 - 3.0 in. (19 - 76 mm)

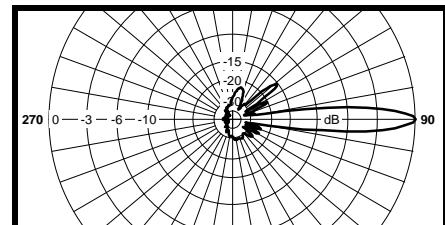
Materials

Radiating Elements: Tin-Plated copper on PCB
Reflector: Irridated aluminum
Radome: Gray UV stabilized ASA
Clamps: Aluminum, EDZ Steel (HDG Steel Opt)

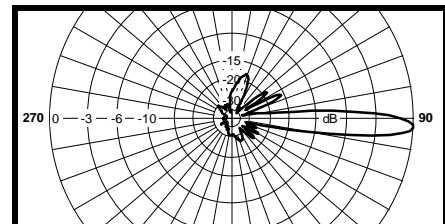
H-Plane



E-Plane

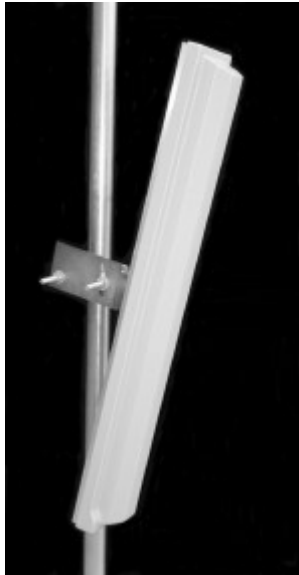


T0



T2

TA-2504-8-90 Sector 2500-2700 MHz



The TA-2504-8-90 is a medium-gain vertically polarized 90 degree sectoral antenna. The unit consists of a linear dipole array with fixed side panels to achieve azimuth beamwidth control. The radiating elements are protected by a weatherproof UV stabilized radome for long term operation under severe weather conditions. The elements are further placed at DC ground to aid in lightning protection and prevent static buildup.

Electrical Specifications

Frequency Range: 2500-2700 MHz
Gain: 15.5 +/- 0.5 dBi
VSWR: 1.5:1 max.
Front to Back Ratio: 25 dB min.
Polarization: Vertical
Power Rating: 200 Watts
H-Plane Beamwidth: 90 degrees
E-Plane Beamwidth: 7.5 degrees
Cross Pol. Discrimination: 30 dB typ., 28 dB min.
Impedance: 50 ohms nominal
Termination: N female

Typical mid band values. (For details , contact factory)
 Specifications subject to change without notice

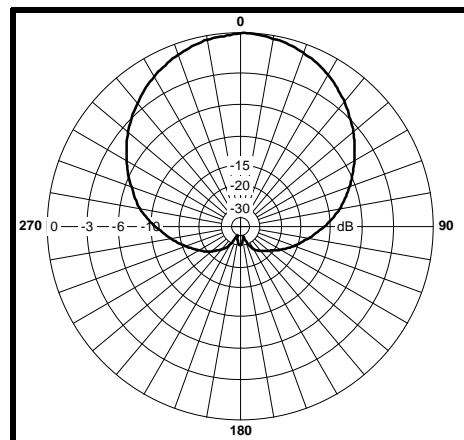
Mechanical Specifications

Length: 36.4 in. (925 mm)
Width: 5.5 in. (140 mm)
Depth: 3.5 in. (89 mm)
Weight (incl. Clamps): 9 lb. (4.1 kg)
Rated Wind Velocity: 125 mph (200 km/h)
Hor. Thrust at rated wind: 89 lb. (40.4 kg)
Mechanical Tilt: 0 - 10 degrees
Mounting (O.D.): 0.75 - 3.0 in. (48 - 114 mm),
 4.5 in. Optional

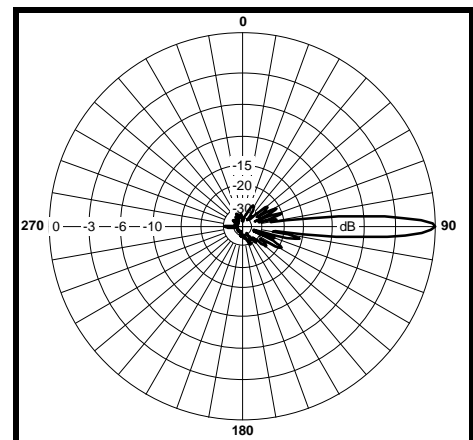
Materials

Radiating Elements: Plated copper on PCB
Reflector: Irridited aluminum
Radome: Gray UV stabilized ASA
Clamps: Aluminum, EDZ and HDG Steel

H-Plane

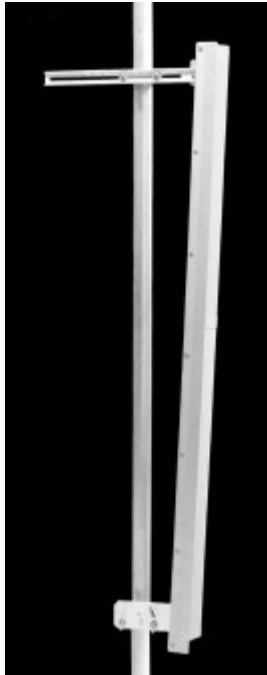


E-Plane



TA-2504-16-50 Sector

2500-2700 MHz



The TA-2504-16-50 is a high-gain vertically polarized 50 degree sectoral antenna. It consists of a linear dipole array with fixed side panels to achieve the correct beamwidth. Radiating elements are protected by a weatherproof radome for operation under severe weather conditions and are at DC ground to aid in lightning protection. Due to the very narrow elevation beamwidth, TIL-TEK recommends that this antenna be used on stable platforms and where other options are not practical.

Electrical Specifications

Frequency Range: 2500-2700 MHz
Gain: 19.5 +/- 1 dBi
VSWR: 1.5:1 max.
Front to Back Ratio: 25 dB min.
Polarization: Vertical
Power Rating: 50 Watts
H-Plane Beamwidth: 50° +/- 5°
E-Plane Beamwidth: 5° +/- 0.5°
Cross Pol. Discrimination: 20 dB min.
Impedance: 50 ohms nominal
Termination: N female

Typical mid band values. (For details , contact factory)
 Specifications subject to change without notice

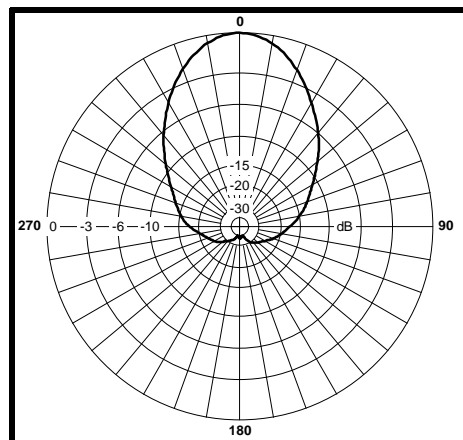
Mechanical Specifications

Length: 70.5 in. (1792 mm)
Width: 5.5 in. (140 mm)
Depth: 3.75 in. (95 mm)
Weight (incl. Clamps): 15 lb. (6.8 kg)
Rated Wind Velocity: 125 mph (200 km/h)
Hor. Thrust at rated wind: 166 lb. (75 kg)
Mechanical Tilt: 0 - 10°, in 1° increments
Mounting (O.D.): 0.75 - 3.0 in. (19 - 76 mm)

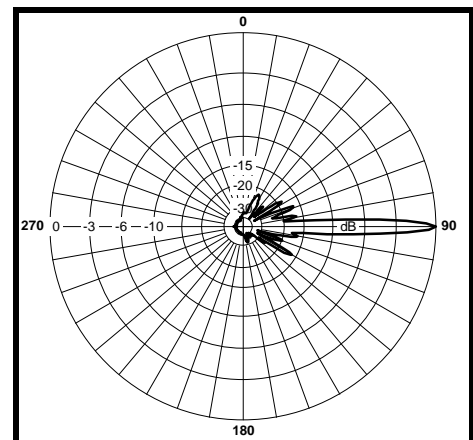
Materials

Radiating Elements: Tin-Plated copper on PCB
Reflector: Irridited aluminum
Radome: Gray UV stabilized ASA
Clamps: Aluminum and HDG steel

H-Plane

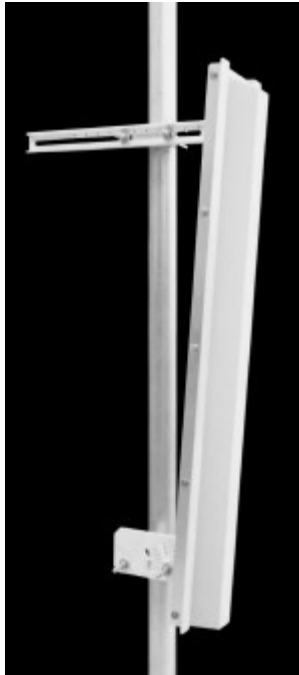


E-Plane



TA-2505H-8 Adjustable Sector

2500-2700 MHz



The TA-2505H-8 is a medium-gain horizontally polarized sectoral antenna that is field adjustable to either 50 or 60 degrees. It consists of a linear dipole array with fixed side panels to achieve the correct beamwidth. Radiating elements are protected by a weatherproof radome for operation under severe weather conditions and are at DC ground to aid in lightning protection.

Electrical Specifications

Frequency Range: 2500-2700 MHz
Gain: 17.5 +/- 1 dBi @ 50°
 16.0 +/- 1 dBi @ 60°
VSWR: 1.5:1 max.
Front to Back Ratio: 25 dB min. @ 50°
 24 dB min. @ 60°
Polarization: Horizontal
Power Rating: 50 Watts
H-Plane Beamwidth: 8° +/- 1°
E-Plane Beamwidth: 50° +/- 5°, 60° +/- 5°
Cross Pol. Discrimination: 20 dB (azimuth)
Impedance: 50 ohms nominal
Termination: N female

Typical mid band values. (For details, contact factory)
 Specifications subject to change without notice

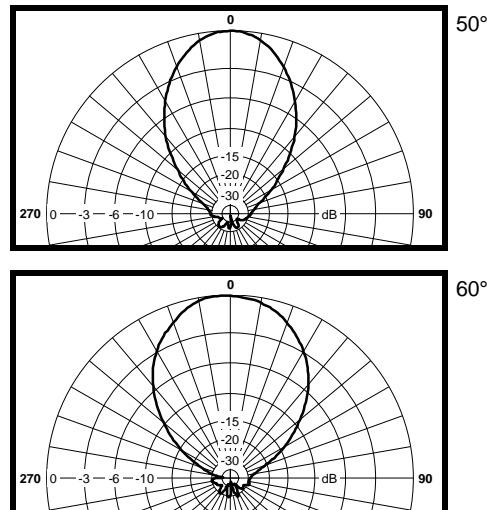
Mechanical Specifications

Length: 39.4 in. (1000 mm)
Width: 8 in. (203 mm)
Depth: 3.75 in. (95 mm)
Weight (incl. Clamps): 9 lb. (4 kg)
Rated Wind Velocity: 125 mph (200 km/h)
Hor. Thrust at rated wind: 84 lb. (38 kg)
Mechanical Tilt: 0 - 10°, 1° increments
Mounting (O.D.): 0.75 - 3.0 in. (19 - 76 mm)

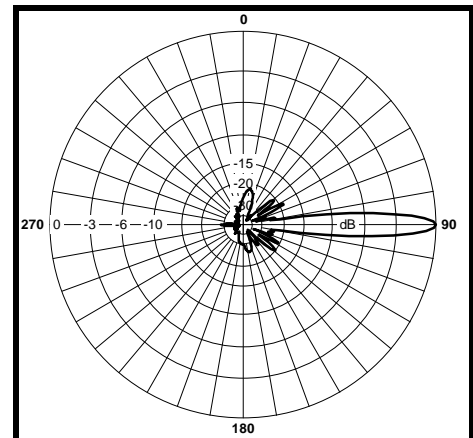
Materials

Radiating Elements: Tin-Plated copper on PCB
Reflector: Irridated aluminum
Radome: Gray UV stabilized ASA
Clamps: Aluminum and HDG steel

E-Plane

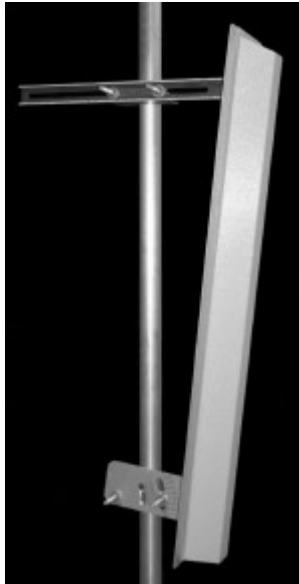


H-Plane



TA-2505H-8-90 Sector

2500-2700 MHz



The TA-2505H-8-90 is a medium-gain horizontally polarized 90 degree sectoral antenna. It consists of a linear dipole array with fixed side panels to achieve the correct beamwidth. Radiating elements are protected by a weatherproof radome for operation under severe weather conditions and are at DC ground to aid in lightning protection.

Electrical Specifications

Frequency Range: 2500-2700 MHz
Gain: 14.5 dBi
VSWR: 1.5:1 max.
Front to Back Ratio: 19 dB min.
Polarization: Horizontal
Power Rating: 25 Watts
H-Plane Beamwidth: 8 degrees
E-Plane Beamwidth: 90 degrees
Cross Pol. Discrimination: 20 dB @ 90° +/- 5°
Impedance: 50 ohms nominal
Termination: N female

Typical mid band values. (For details , contact factory)
 Specifications subject to change without notice

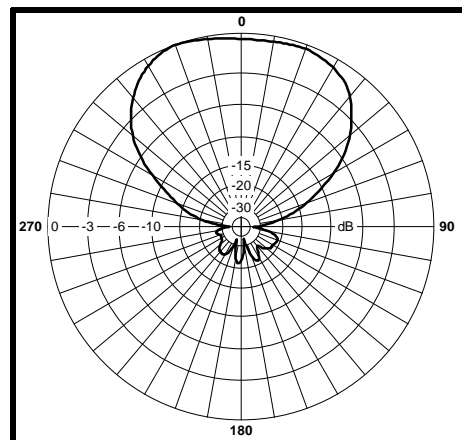
Mechanical Specifications

Length: 39.4 in. (1000 mm)
Width: 8 in. (203 mm)
Depth: 3.75 in. (95 mm)
Weight (incl. Clamps): 9 lb. (4 kg)
Rated Wind Velocity: 125 mph (200 km/h)
Hor. Thrust at rated wind: 84 lb. (38 kg)
Mechanical Tilt: 0 - 10°, 1° increments
Mounting (O.D.): 0.75 - 3.0 in. (19 - 76 mm)

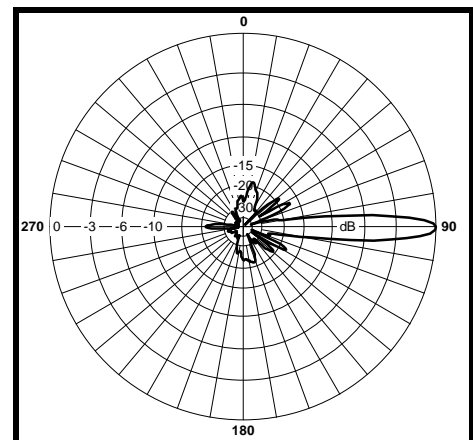
Materials

Radiating Elements: Tin-Plated copper on PCB
Reflector: Irridited aluminum
Radome: Gray UV stabilized ASA
Clamps: Aluminum and HDG steel

E-Plane

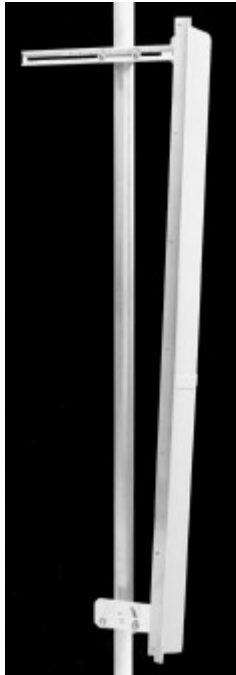


H-Plane



TA-2505H-16-50 Sector

2500-2700 MHz



The TA-2505H-16-50 is a high-gain horizontally polarized 50 degree sectoral antenna. It consists of a linear dipole array with fixed side panels to achieve the correct beamwidth. Radiating elements are protected by a weatherproof radome for operation under severe weather conditions and are at DC ground to aid in lightning protection. Due to the very narrow elevation beamwidth, TIL-TEK recommends that this antenna be used on stable platforms and where other options are not practical.

Electrical Specifications

Frequency Range: 2500-2700 MHz
Gain: 19.5 +/- 0.5 dB
VSWR: 1.5:1 max.
Front to Back Ratio: 25 dB min.
Polarization: Horizontal
Power Rating: 50 Watts
H-Plane Beamwidth: 5° +/- 0.5°
E-Plane Beamwidth: 50° +/- 5°
Cross Pol. Discrimination: 20 dB (azimuth)
Impedance: 50 ohms nominal
Termination: N female

Mechanical Specifications

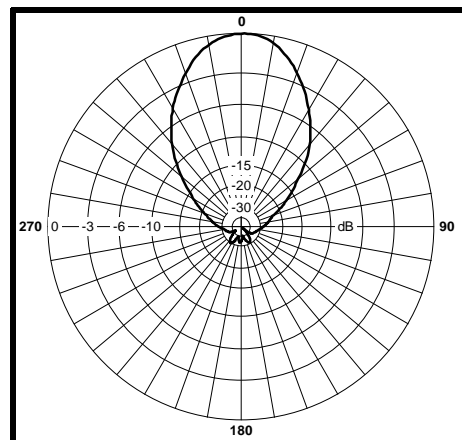
Length: 70.5 in. (1792 mm)
Width: 8 in. (203 mm)
Depth: 3.75 in. (95 mm)
Weight (incl. Clamps): 16 lb. (7.3 kg)
Rated Wind Velocity: 125 mph (200 km/h)
Hor. Thrust at rated wind: 243 lb. (110 kg)
Mechanical Tilt: 0 - 10°, 1° increments
Mounting (O.D.): 0.75 - 3.0 in. (19 - 76 mm)

Materials

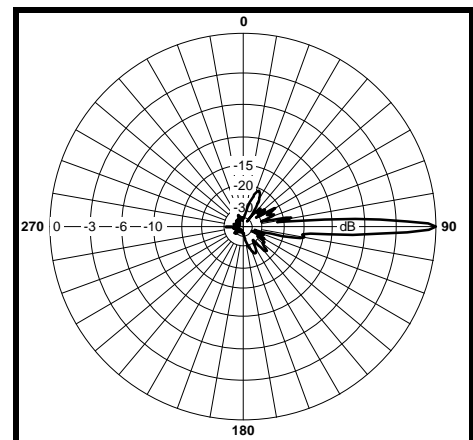
Radiating Elements: Tin-Plated copper on PCB
Reflector: Irridited aluminum
Radome: Gray UV stabilized ASA
Clamps: Aluminum and HDG steel

Typical mid band values. (For details , contact factory)
 Specifications subject to change without notice

E-Plane



H-Plane



TA-2506 Panel 2485-2700 MHz



The TA-2506 is a medium gain, vertically or horizontally polarized panel antenna. The antenna has relatively broad E & H plane patterns and is designed for severe weather conditions. The antenna is at DC ground to aid in lightning protection.

Electrical Specifications

Frequency Range: 2485-2700 MHz
Gain: 17 +/- 0.5 dBi
VSWR: 1.5:1 max.
Front to Back Ratio: 25 dB typical
Polarization: Vertical or Horizontal
Power Rating: 100 Watts
H-Plane Beamwidth: 26 degrees
E-Plane Beamwidth: 21 degrees
Impedance: 50 ohms nominal
Termination: N female

Typical mid band values. (For details , contact factory)
 Specifications subject to change without notice

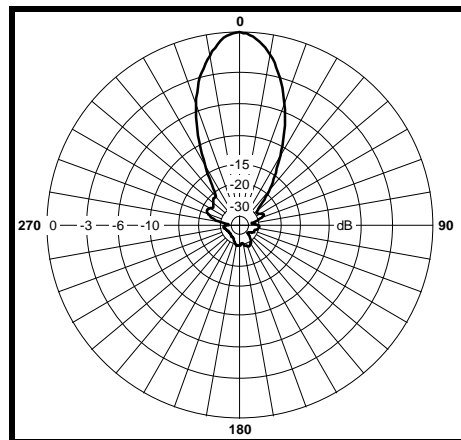
Mechanical Specifications

Length: 14 in. (356 mm)
Width: 12 in. (305 mm)
Depth: 4 in. (102 mm)
Weight (incl. Clamps): 5 lb. (2.3 kg)
Rated Wind Velocity: 125 mph (200 km/h)
Hor. Thrust at rated wind: 73 lb. (33.2 kg)
Mounting (O.D.): 1.9 in. (48.3 mm)

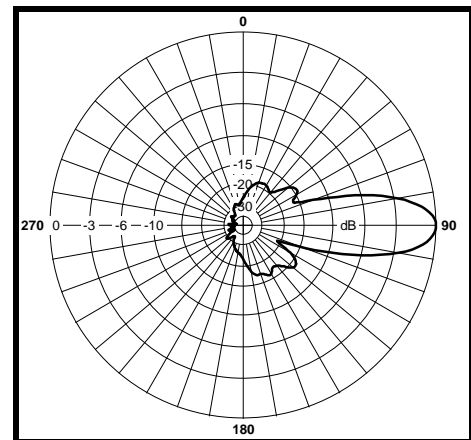
Materials

Radiating Elements: Tin plated copper on PCB
Reflector: Irridated aluminum
Radome: Gray UV stabilized ASA
Clamps: HDG steel

H-Plane



E-Plane



TA-2518 Solid Parabolic 2485-2700 MHz



TA-2518

The TA-2518 is an 18 inch diameter solid parabolic antenna. The antenna feed is bolted to the aluminum reflector so the polarization can easily be changed in the field by rotating the antenna through 90 degrees. A full radome (TA-2518R) is also available for extreme weather conditions.

Electrical Specifications

Frequency Range: 2485-2700 MHz
Gain: 19 dBi
VSWR: 1.35:1 (1.5:1 for TA-2518R)
Front to Back Ratio: 25 dB min.
Polarization: Vertical or Horizontal
Power Rating: 100 Watts
H-Plane Beamwidth: 18 degrees
E-Plane Beamwidth: 20 degrees
Cross Pol. Discrimination: 25 dB
Impedance: 50 ohms nominal
Termination: N female

Typical mid band values. (For details , contact factory)
 Specifications subject to change without notice

Mechanical Specifications

Diameter: 19.25 in. (489 mm)
Depth: 8 in. (204 mm)
Weight (Incl. Clamps): 12 lb. (5.5 kg)
Rated Wind Velocity: 125 mph (200 km/h)
Hor. Thrust at rated wind: 136 lb. (61.8 kg)
 with radome: 69 lb. (31.4 kg)
Mechanical Tilt: 0 ± 10 degrees
Mounting (O.D.): 1.75 - 4.0 in. (44.5 - 102 mm)

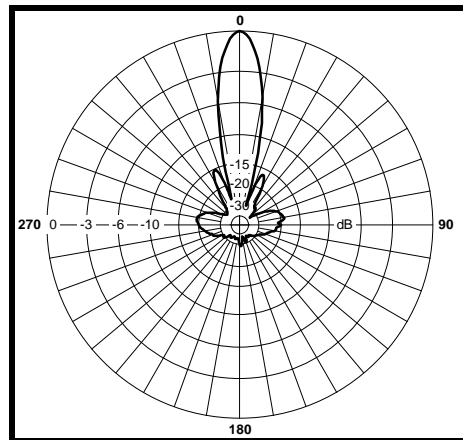
Materials

Radiating Elements: Plated copper on PCB
Reflector: Irridited aluminum
Radome: Gray UV stabilized ASA
Clamps: Aluminum and HDG steel

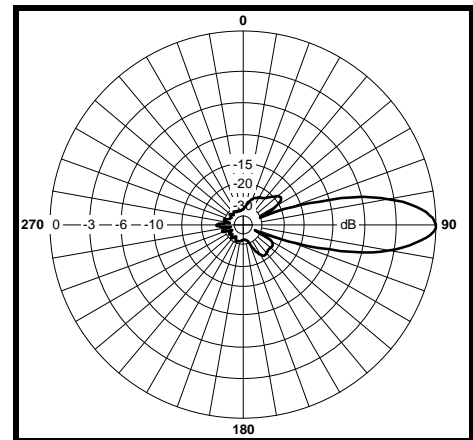


TA-2518R

H-Plane



E-Plane



TA-2524 Solid Parabolic 2485-2700 MHz



TA-2524

The TA-2524 is a 24 inch diameter solid parabolic antenna. The antenna feed is bolted to the aluminum reflector so the polarization can easily be changed in the field by rotating the antenna through 90 degrees. A full radome (TA-2524R) is also available for extreme weather conditions.

Electrical Specifications

Frequency Range: 2485-2700 MHz
Gain: 21 dBi
VSWR: 1.35:1 max.
Front to Back Ratio: 28 dB min.
Polarization: Vertical or Horizontal
Power Rating: 100 Watts
H-Plane Beamwidth: 13.5 degrees
E-Plane Beamwidth: 15 degrees
Cross Pol. Discrimination: 25 dB
Impedance: 50 ohms nominal
Termination: N female

Typical mid band values. (For details , contact factory)
 Specifications subject to change without notice

Mechanical Specifications

Diameter: 25.25 in. (641 mm)
Depth: 8 in. (204 mm)
Weight (Incl. Clamps): 20 lb. (9.1 kg)
Rated Wind Velocity: 125 mph (200 km/h)
Hor. Thrust at rated wind: 234 lb. (106.4 kg)
 with radome: 120 lb. (54.5 kg)
Mechanical Tilt: 0 ± 10 degrees
Mounting (O.D.): 1.75 - 4.0 in. (44.5 - 102 mm)

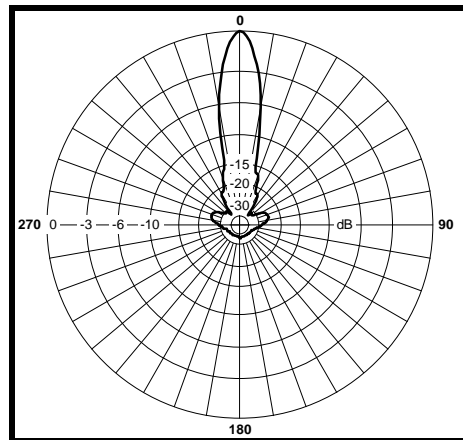
Materials

Radiating Elements: Plated copper on PCB
Reflector: Irridited aluminum
Radome: Gray UV stabilized ASA
Clamps: Aluminum and HDG steel

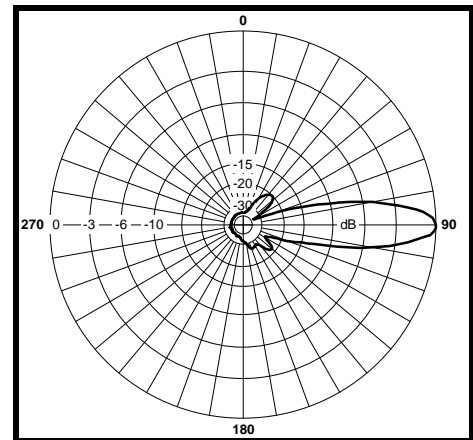


TA-2524R

H-Plane

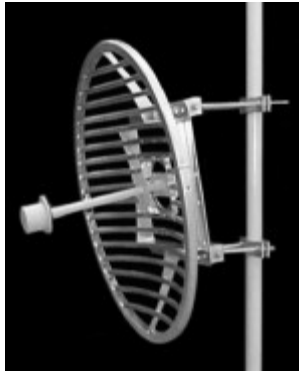


E-Plane



TA-2536 Grid Parabolic

2485-2690 MHz



The TA-2536 is a grid parabolic antenna with a broadband dipole horn feed which is sealed for superior weatherability. The antenna is at DC ground to aid in lightning protection. These antennas are extremely rugged and are designed to provide superior performance in any conditions.

Electrical Specifications

Frequency Range: 2485-2690 MHz
Gain: 25.5 dBi
VSWR: 1.35:1 max.
Front to Back Ratio: 30 dB min.
Polarization: Vertical or Horizontal
Power Rating: 200 Watts
H-Plane Beamwidth: 8.3 degrees
E-Plane Beamwidth: 9.3 degrees
Cross Pol. Discrimination: 30 dB
Impedance: 50 ohms nominal
Termination: N female

Typical mid band values. (For details , contact factory)
 Specifications subject to change without notice

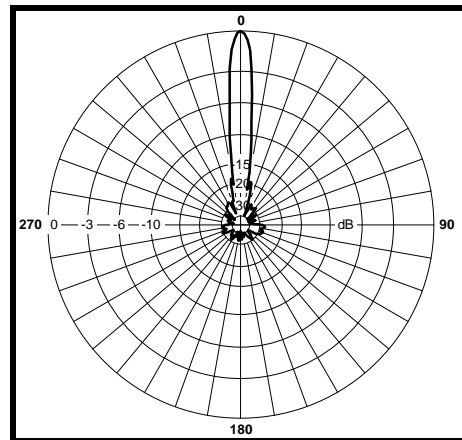
Mechanical Specifications

Diameter: 38.5 in. (978 mm)
Weight (Incl. clamps): 40 lb. (18.2 kg)
Rated Wind Velocity: 125 mph (200 km/h)
Hor. Thrust at rated wind: 177 lb. (80.5 kg)
Mechanical Tilt: 0 - 15 degrees
Mounting (O.D.): 1.75 - 4.5 in. (44.5 - 114 mm)

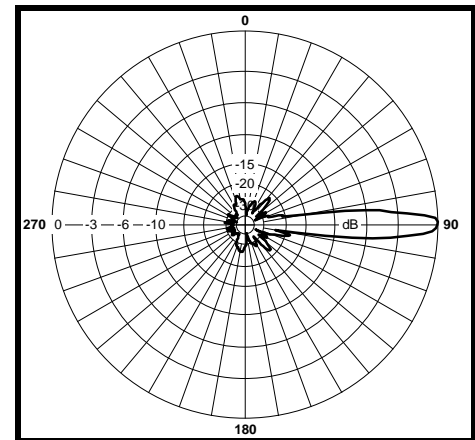
Materials

Radiating Elements: Aluminum
Reflector: Irridated aluminum
Clamps: HDG steel

H-Plane



E-Plane



TA-2548 Grid Parabolic

2485-2700 MHz



The TA-2548 is a grid parabolic antenna with a broadband dipole horn feed which is sealed for superior weatherability. The antenna is at DC ground to aid in lightning protection. These antennas are extremely rugged and are designed to provide superior performance in any conditions.

Electrical Specifications

Frequency Range: 2485-2700 MHz
Gain: 28 dBi
VSWR: 1.35:1 max.
Front to Back Ratio: 30 dB min.
Polarization: Vertical or Horizontal
Power Rating: 200 Watts
H-Plane Beamwidth: 6.3 degrees
E-Plane Beamwidth: 7 degrees
Cross Pol. Discrimination: 30 dB
Impedance: 50 ohms nominal
Termination: N female

Typical mid band values. (For details , contact factory)
 Specifications subject to change without notice

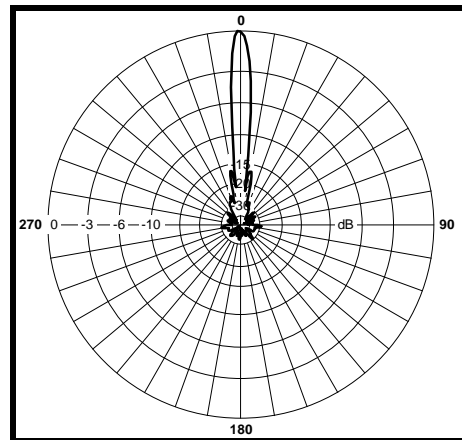
Mechanical Specifications

Diameter: 50.5 in. (1283 mm)
Weight (Incl. clamps): 50 lb. (22.7 kg)
Rated Wind Velocity: 125 mph (200 km/h)
Hor. Thrust at rated wind: 304 lb. (138.2 kg)
Mechanical Tilt: 0 - 15 degrees
Mounting (O.D.): 1.75 - 4.5 in. (44.5 - 114 mm)

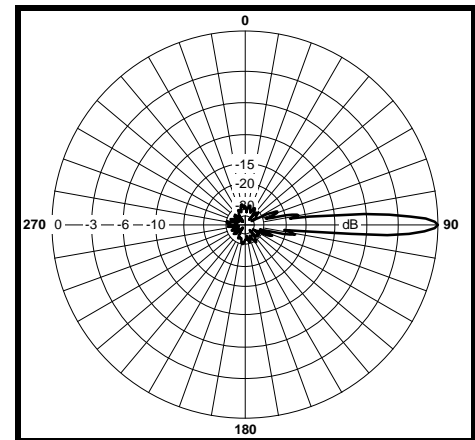
Materials

Radiating Elements: Aluminum
Reflector: Irridated aluminum
Clamps: HDG steel

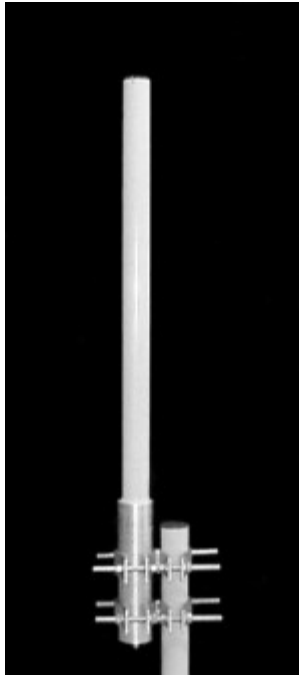
H-Plane



E-Plane



TA-2550 Omnidirectional 2485-2700 MHz



The TA-2550 is a 10 dBi omnidirectional antenna consisting of center fed collinear dipoles in a UV stabilized fiberglass radome. The antenna is designed for severe weather conditions and is at DC ground to aid in lightning protection.

Electrical Specifications

Frequency Range: 2485-2700 MHz

Gain: 10 dBi @ 2485-2690 Mhz

9.25 dBi @ 2700 Mhz

VSWR: 1.5:1 max.

Polarization: Vertical

Power Rating: 50 Watts

H-Plane Beamwidth: 360 degrees

E-Plane Beamwidth: 8 degrees

Cross Pol. Discrimination: 20 dB min.

Impedance: 50 ohms nominal

Termination: N female

Typical mid band values. (For details , contact factory)
Specifications subject to change without notice

Mechanical Specifications

Length: 48 in. (1219 mm)

Diameter: 2.25 in. (57 mm)

Weight (Incl. Clamps): 15 lb. (6.8 kg)

Rated Wind Velocity: 125 mph (200 km/h)

Hor. Thrust at rated wind: 31 lb. (14.1 kg)

Mounting (O.D.): 1.75 - 4.0 in. (44.5 - 102 mm)

Materials

Radiating Elements: Copper

Radome: Gray UV stabilized fiberglass

Clamps: HDG steel

E-Plane

