

Details

806-896 MHz

The TS-80F-4-ADJV adjustable sector is a PIM rated replacement for our older TA-803 models. It has the same footprint of the TA-803 for ease of on site swap outs. The antenna with its PCB array, is enclosed in an aluminum base with an ASA UV stabilized radome for superior performance and weatherability. An adjustable azimuth pattern and up to 15 degrees of mechanical downtilt make this a remarkably versatile antenna.

Electrical Specifications

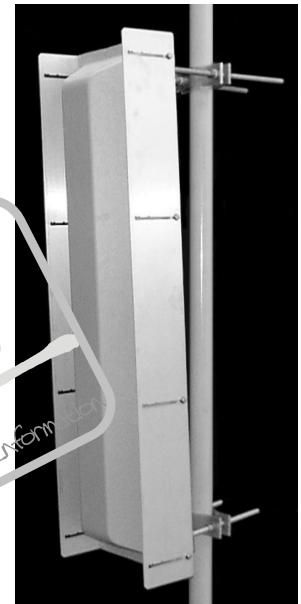
Freq Range:	806-896 MHz
Gain:	12.5 dBd @ 60°, 11 dBd @ 90°
Gain Multiple:	10.75 dBd @ 105°, 10.5 dBd @ 120°
VSWR:	1.5:1 max. 1.35:1 typical
Front Back:	-18 dB min. -25 dB typical
Pol:	vertical
Power:	500 watts
H Plane BW:	60, 90, 105, 120 degrees
E Plane BW:	18 degrees
Electrical Downtilt:	0°, 4°, 6°, 8°, 9°, 10°, 12°, 14°, 18°
X Pol:	20 dB min.
3rd Order IM 2 20w:	-150 dBc
Imp:	50 ohms nominal
Termination:	7/16 DIN Female

Mechanical Specifications

Length:	48 in. (1220 mm)
Width:	13 in. (330 mm)
Depth:	8 in. (203 mm)
Weight:	34 lb. (15.4 kg)
Rated Wind Vel:	125 mph (200 km/h)
Hor Thrust:	269 lb. (122.1 kg)
Mech tilt:	0 - 15 degrees (w/ TMC-104)
Mounting Pipe:	1.75 - 4.0 in. (44.5 - 102 mm)

Material Specifications

Radiating Elements:	Tin Plated PCB's
Reflector:	Irridited aluminum
Radome:	Gray UV stabilized ASA
Clamps:	HDG steel



Antenna Patterns

