

Details

806-896, 824-896, 890-960 MHz

The TA-811-45 is a fixed pattern version of the TA-811 adjustable sector. It is enclosed in an aluminum base and has an ASA UV stabilized radome for superior performance and weatherability. Extremely low side lobes and up to 6 degrees of mechanical downtilt make this a remarkably versatile antenna.

Electrical Specifications

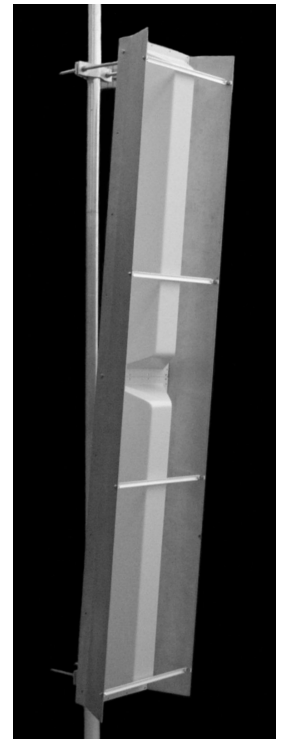
Freq Range:	806-896, 824-896, 890-960 MHz
Gain:	17 dbd @ 45°
VSWR:	1.5:1 max. 1.35:1 typical
Front Back:	25 dB min. 30 dB typical
Pol:	Vertical
Power:	500 watts
H Plane BW:	45 degrees
E Plane BW:	8.5 degrees
Electrical Downtilt:	0°, 2°, 4°, 5°, 6°, 8°, 10°, 11°, 13°, 15°
X Pol:	20 dB min.
Imp:	50 ohms nominal
Termination:	N female (7/16 optional)

Mechanical Specifications

Length:	96 in. (2438 mm)
width:	19 in. (483 mm)
Depth:	8.2 in. (208 mm)
weight:	62 lb. (28 kg)
Rated Wind Vel:	120 mph (193 km/h)
Hor Thrust:	792 lb. (359 kg)
Mech tilt:	0 - 6 degrees
Mounting Pipe:	1.75 - 4.5 in. (44.5 - 114 mm)

Material Specifications

Radiating Elements:	Irridited aluminum
Reflector:	Irridited aluminum
Radome:	Gray UV stabilized ASA
Clamps:	HDG steel



Antenna Patterns

