

Details

1850-1990 MHz

The TA-1850 is a 10 dBi omnidirectional antenna consisting of center fed collinear dipoles in a UV stabilized fiberglass radome. The antenna is designed for severe weather conditions and is at DC ground to aid in lightning protection. A 2° downtilt inverted antenna option is available which further improves network performance at congested cell towers. Order as TA-1850-T2-INV.

Electrical Specifications

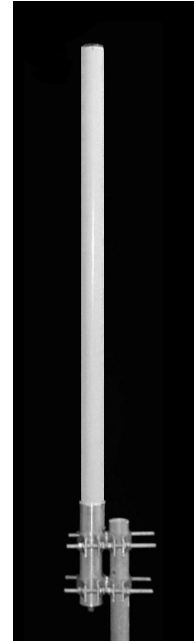
Freq Range:	1850-1990 MHz
Gain:	10 dBi
VSWR:	1.5:1 max.
Pol:	Vertical
Power:	200 watts
H Plane BW:	360 degrees
E Plane BW:	8 degrees
Electrical Downtilt:	0, 2, 4 degrees
X Pol:	20 dB min.
Imp:	50 ohms nominal
Termination:	N female (7/16 DIN optional)

Mechanical Specifications

Diameter:	2.25 in. (57 mm)
Length:	57 in. (1448 mm)
Weight:	17 lb. (7.7 kg)
Rated Wind vel:	125 mph (200 km/h)
Hor Thrust:	37 lb. (16.8 kg)
Mounting Pipe:	1.75 - 4.0 in. (44.5 - 102 mm)

Material Specifications

Radiating Elements:	Copper
Radome:	Gray UV stabilized fiberglass
Clamps:	HDG steel



Antenna Patterns

