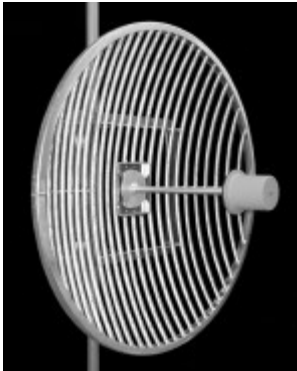


TA-1448 Grid Parabolic 1425-1535 MHz



The TA-1448 is a grid parabolic antenna with a broadband dipole horn feed which is sealed for superior weatherability. The antenna is extremely rugged and is designed to provide superior performance in any conditions. The antenna is at DC ground to aid in lightning protection.

Electrical Specifications

Frequency Range: 1425-1535 MHz
Gain: 23.5 dBi
VSWR: 1.5:1 max.
Front to Back Ratio: 30 dB min.
Polarization: Vertical or Horizontal
Power Rating: 250 Watts
H-Plane Beamwidth: 11 degrees
E-Plane Beamwidth: 12 degrees
Cross Pol. Discrimination: 30 dB min.
Impedance: 50 ohms nominal
Termination: N female

Typical mid band values. (For details , contact factory)
 Specifications subject to change without notice

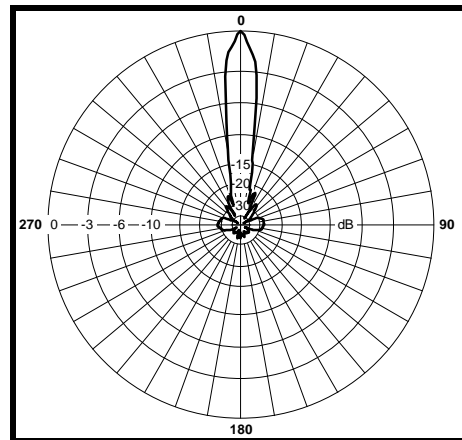
Mechanical Specifications

Diameter: 50.5 in. (1283 mm)
Weight (Incl. clamps): 50 lb. (22.7 kg)
Rated Wind Velocity: 125 mph (200 km/h)
Hor. Thrust at rated wind: 304 lb. (138.2 kg)
Mechanical Tilt: 0 - 15 degrees
Mounting (O.D.): 1.75 - 4.5 in. (44.5 - 114 mm)

Materials

Radiating Elements: Aluminum
Reflector: Irridated aluminum
Clamps: HDG steel

H-Plane



E-Plane

